



Lilygo T-Beam SUPREME TS1 Case by Alley Cat



Alley Cat

[VIEW IN BROWSER](#)

updated 2. 6. 2025 | published 2. 6. 2025

Summary

READ THE DESCRIPTION! UPDATED! I made a case for the Lilygo TBeam SUPREME V3.0. It has slots to strap it to things.

[Hobby & Makers](#) > [Electronics](#)

Tags: [case](#) [communicator](#) [molle](#) [lora](#) [tbeam](#) [lilygo](#)
[meshtastic](#) [alleychat](#) [meshcore](#)

This is the classic version, there is a new version [here](#). Commercial Use and Attribution Notice:

Alley Chat TS1 © 2024 by Majestic AV, LLC. is licensed under [CC BY-SA 4.0](#).

Commercial use of this design, including promotional use, selling, and reselling to other businesses for sale, is permitted under the following conditions: Prior to any commercial exploitation, you must contact Alley Cat or MajesticAV, LLC to ensure proper attribution. This requirement extends to any sharing, distribution, or creation of derivative works, including manually crafted designs that emulate this design. Proper attribution must be clearly stated in all instances of use. For official contact methods and further information, visit [Majestic AV, LLC - Alley Cat](#).

Any other sources are unauthorized and should not be used for commercial or licensing inquiries.

Suggested Print Settings:

Material: **PLA+** or **PETG**

Nozzle: **0.4mm**

Extrusion Width **0.4mm**

Layer Height: **0.2mm**

Perimeters: **3**

Infill: **20%**

Top/Bottom Layers: **5**

Support Material: **None**

3D Printing Disclaimer:

Thank you for downloading my CAD design! I want to assure you that extensive testing and iteration went into creating this design. However, please keep in mind that 3D printing involves a wide range of variables, including different types of filament, printer settings, and calibration levels. These factors can significantly impact the final print.

Before concluding that the design is flawed, I encourage you to:

- **Check your printer calibration:** Ensure your printer is properly calibrated.
- **Adjust print settings:** Try changing the print settings to achieve better results.
- **Resize the model:** Scaling the model up or down slightly may resolve fit issues.

If you encounter any issues or need assistance, please feel free to reach out to me. I am here to help and can provide guidance to achieve the best results. Claiming a design is bad without considering these variables does a disservice to the community and may discourage others from trying a design that could work perfectly with minor adjustments.

Thank you for your understanding and cooperation. Happy printing!

Description:

Custom case for the T-BeamSUPREME V3.0 ESP32-S3 with ublox M10. Only requires 2 M3 nuts and 2 M3x8 bolts. Use CoverMount.stl if you want to add a thread adapter for 1/4-20 mounting. The slots are spaced to be compatible with molle webbing.

You can order these from a couple of sellers online as well, I am not affiliated with these stores but I have been in contact with the sellers and their quality and reviews are great. [Here](#) or [here](#).

T-Beam Supreme Affiliate Link: [Buy a T-Beam Supreme](#)

Design Updates:

24 July 2024: Updated the fronts to deal with some slight changes on the latest T-Beams coming from Lilygo. Also added the integrated mount back for people who don't want to use the separate adapter. New button style that makes it easier to print and install the buttons. Multiple options for raised or flush buttons. The old buttons still work and are in the "Old Files" folder. If you are printing a new case, make sure you get the new front and back to make sure they work together better.

20 July 2024: New vertical clip that uses a Baofeng UV5R compatible clip.

18 June 2024: It appears Lilygo has changed the mold for the plastic piece that holds everything together, 0.8mm thicker... so I modified the case to deal with it. Hopefully it hasn't affected too many people, but if you've had an issue with the case closing all the way in the SMA end, this might fix it.

4 June 2024: Major update with all the new design language as the TB1 and the upcoming new Supreme case, the TB2. This one has antenna holes for 10, 13, and 15mm antenna bases. The threaded mount is gone because there is an adapter now, and a lot of small cosmetic changes, but otherwise it's not significantly different. I will leave all the old files in a folder. A new Supreme case is coming that will be a different listing because it is so different.

27 May 2024: Updated all the clips and moved them to a folder. Now there are different models for PLA+ and PETG. I still recommend PETG, but if you have to use PLA+, these will probably work better for you.

4 May 2024: Added a new two piece vertical molle clip so you can print with the layer lines in the right orientation. The old one works fine with more flexible filaments, but with PLA+, definitely use the new one. You might need to bend part A apart slightly to get part B into it. It's a really tight fit but it's really solid.

9 February 2024: Big update, antenna opening is either 10mm or 13mm. If you downloaded before this, the old front won't fit with the new back. The new one only has two tabs on the antenna side instead of three.

2 February 2024: Added a version with a larger antenna hole and simplified the files.

Video:

Model files



Front

4 files



alley-chat-ts1-front-ridges.stl



alley-chat-ts1-front-smooth.stl



alley-chat-ts1-front-ridges-mount.stl

☐ Threaded hole for a 1/4-20 adapter



alley-chat-ts1-front-smooth-mount.stl

☐ Threaded hole for a 1/4-20 adapter



Back

12 files



alley-chat-ts1-back-smooth-10mm-inserts.stl



alley-chat-ts1-back-ridges-10mm-inserts.stl



alley-chat-ts1-back-smooth-10mm-nuts.stl



alley-chat-ts1-back-ridges-13mm-inserts.stl



alley-chat-ts1-back-ridges-13mm-nuts.stl



alley-chat-ts1-back-smooth-15mm-nuts.stl



alley-chat-ts1-back-ridges-15mm-inserts.stl



alley-chat-ts1-back-ridges-10mm-nuts.stl



alley-chat-ts1-back-smooth-15mm-inserts.stl



alley-chat-ts1-back-smooth-13mm-nuts.stl



alley-chat-ts1-back-smooth-13mm-inserts.stl



alley-chat-ts1-back-ridges-15mm-nuts.stl



Buttons

4 files



alley-chat-tsx-buttons-a.stl

☐ Middle button raised



alley-chat-tsx-buttons-b.stl

☐ Side button raised



alley-chat-tsx-buttons-c.stl

☐ both buttons raised



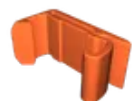
alley-chat-tsx-buttons-d.stl

☐ No buttons raised

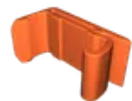


Mounts

10 files



alley-cat-molle-clip-petg.stl



alley-cat-molle-clip-pla.stl



alley-cat-desk-clip-petg.stl



alley-cat-desk-clip-pla.stl



alley-cat-vertical-molle-clip-a-petg.stl



alley-cat-vertical-molle-clip-a-pla.stl



alley-cat-vertical-molle-clip-b.stl

☐ This one is fine for PETG and PLA+



alley-cat-tripod-mount.stl



alley-chat-beam-baofeng-clip-nuts.stl

☐ Requires UV5R compatible clip, M2.5x5mm screws and M2.5 nuts



alley-chat-beam-baofeng-clip-inserts.stl

☐ Requires UV5R compatible clip, M2.5x5mm screws and M2.5 heat set inserts



Old files for the original version

10 files

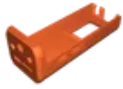


alley-cat-tbeam-classic-front-mount.stl



alley-cat-tbeam-classic-front-no-mount.stl

☐ Use this only if you DON'T want the threads for a 1/4-20 adapter.



alley-cat-tbeam-classic-smooth-front-mount.stl



alley-cat-tbeam-classic-smooth-front-no-mount.stl



alley-cat-tbeam-classic-back-10mm.stl

☐ This works perfectly with the stock antenna.



alley-cat-tbeam-classic-back-13mm.stl

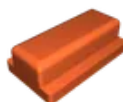
☐ If your antenna is 10.1-13mm at the base, you need this one.



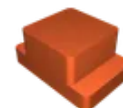
alley-cat-tbeam-classic-smooth-back-10mm.stl



alley-cat-tbeam-classic-smooth-back-13mm.stl



user-button.stl



reset-button.stl

License ©

This work is licensed under a
[Creative Commons \(4.0 International License\)](https://creativecommons.org/licenses/by-sa/4.0/)



Attribution-ShareAlike

- ✗ | Sharing without ATTRIBUTION
- ✓ | Remix Culture allowed
- ✓ | Commercial Use
- ✓ | Free Cultural Works
- ✓ | Meets Open Definition