

DOOR ELEVATION

NOTICE: COPYRIGHT MATERIAL-ALL RIGHTS RESERVED

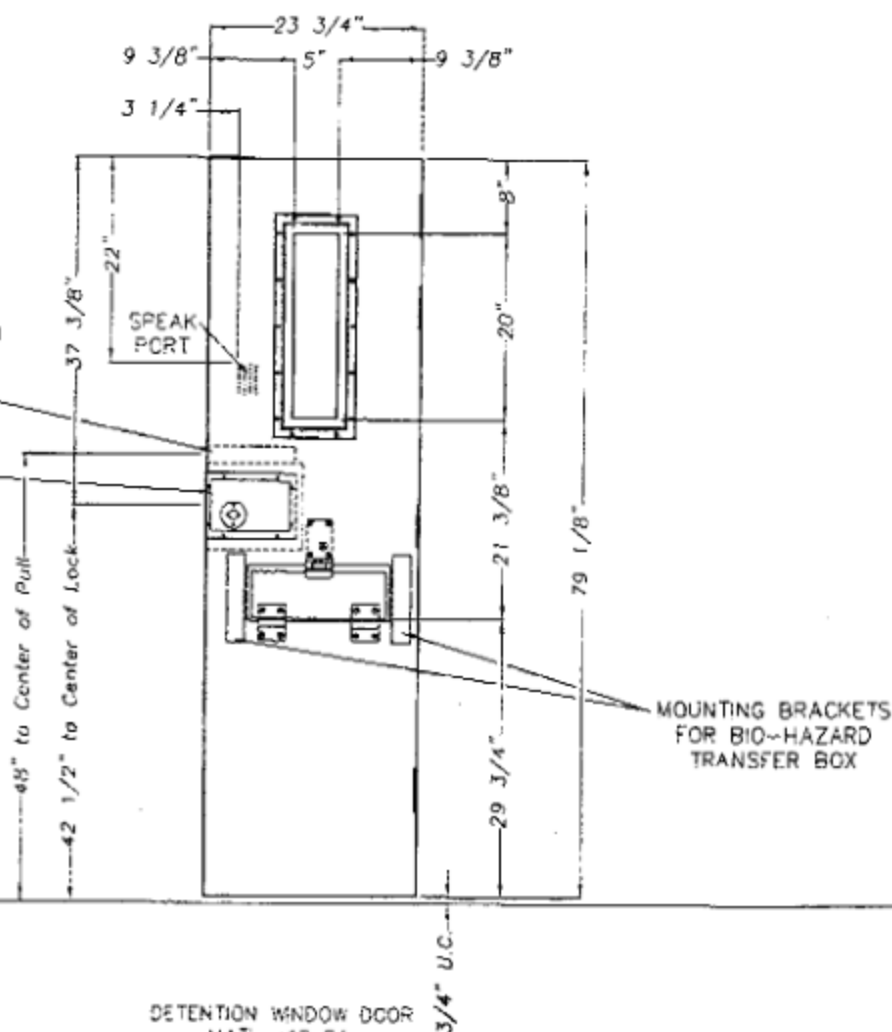
These plans, any attachments, technical data and/or specifications are released for fabrication and/or construction purposes only and may not be copied or reproduced in part or in whole without written permission of Sweeper Metal Fab. All copies are the property of Sweeper Metal Fab and must be returned immediately upon request.

NOTE: LOCK MOUNTING
PLATE, REMOVABLE GLASS
STOP AND CUFF SLOT
DOOR ON HINGE SIDE OF
DOOR

VERIFY 1/2" GAP
REQUIRED FOR GLAZING

INTERNAL REINFORCEMENT
FOR RAISED PULL ON
HINGE SIDE OF DOOR ONLY

F.A. 82 LOCK MOUNTING
PLATE (KEYED ON HINGE
SIDE ONLY) (LOCK BY
OWNER)



DETENTION WINDOW DOOR
MATL: 12 GA.
VIEWED FROM HINGE SIDE
LH SHOWN
QTY.: (1) LH

Checked By:

Date:

3-7-13

| | | |
|------------|----------|--------------------|
| Drawn By: | Date: | Job Name: |
| JLC | 03/07/13 | Metropolitan Corr. |
| Sheet: | of | Location: |
| 1 | 4 | New York, New York |
| Revisions: | | Architect: |
| | | Contractor: |

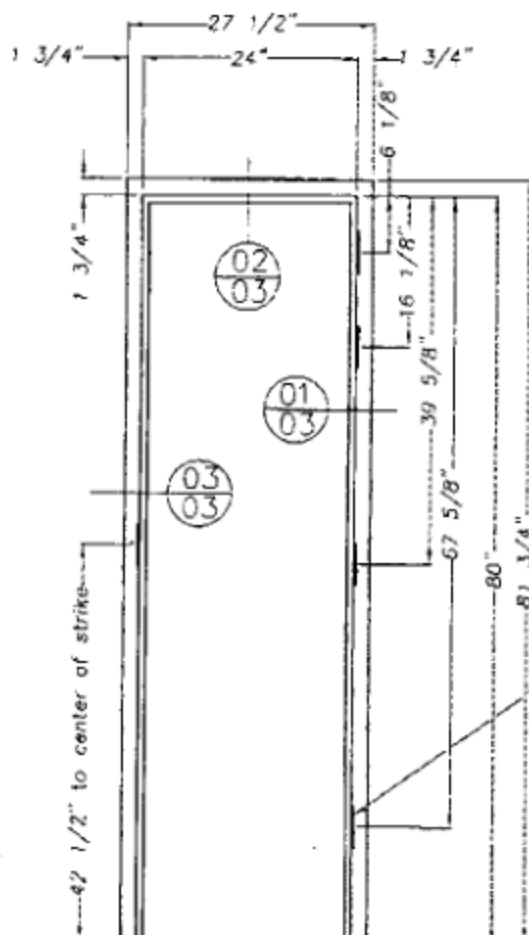
SWEeper
METAL FABRICATORS CORP

DRAWER 672 DRUMRIGHT, CK 74030

DOOR FRAME ELEVATION

NOTICE: COPYRIGHT MATERIAL--ALL RIGHTS RESERVED

These plans, any attachments, technical data and/or specifications are released for fabrication and/or contractual purposes only and may not be copied or reproduced in part or in whole without written permission of Sweeper Metal Fab. All copies are the property of Sweeper Metal Fab and must be returned immediately upon request.



(4) NORTHWEST HARDWARE
NW645FMST HINGES
(BY SMF)

DETENTION DOOR FRAME
MATEL: 12 GA.
JAMB DEPTH: 5 5/8"
VIEWED FROM HINGE SIDE
LH SHOWN
QTY: (1) LH

Checked By: *[Signature]* Date: 3-7-13

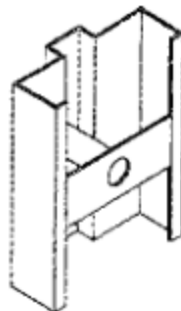
| | | |
|------------|----------|--------------------|
| Drawn By: | Date: | Job Name: |
| JLC | 03/07/13 | Metropolitan Corr. |
| Sheet: | 2 of 4 | Location: |
| | | New York, New York |
| Revisions: | | Architect: |
| | | Contractor: |

SWEeper[®]
METAL FABRICATORS CORP.
DRAWER 672 DRUMRIGHT, OK 74030

FRAME DETAILS

NOTICE: COPYRIGHT MATERIAL-ALL RIGHTS RESERVED

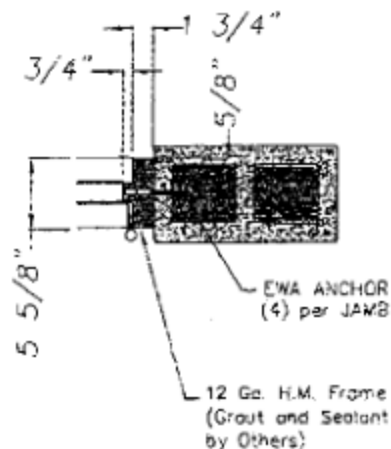
These plans, any attachments, technical data and/or specifications are released for fabrication and/or construction purposes only and may not be copied or reproduced in part or in whole without written permission of Sweeper Metal Fab. All copies are the property of Sweeper Metal Fab. and must be returned immediately upon request.



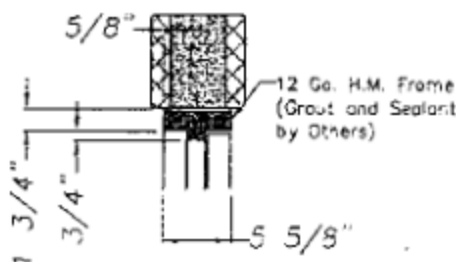
EXPANSION BOLT ANCHOR

(4) per JAMB

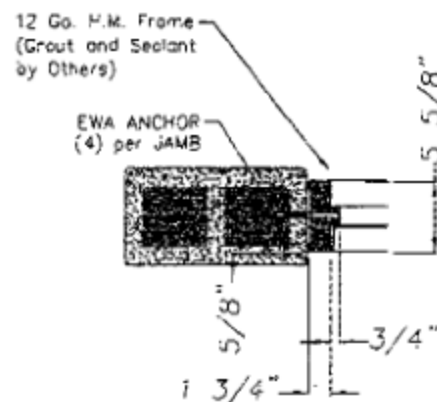
SMF Type 'E'



01 DOOR FRAME HINGE JAMB



02 DOOR FRAME HEAD



03 DOOR FRAME STRIKE JAMB

| | | |
|------------|----------|----------------------|
| Drawn By: | Date: | Job Name: |
| JLC | 03/07/13 | Metropolitan Corr. |
| Sheet: | | Center New York, SHU |
| 3 of 4 | | Location: |
| | | New York, New York |
| Revisions: | | Architect: |
| | | Contractor: |

Checked By: Date: 3-7-13

SWEeper[®]
METAL FABRICATORS CORP.
DRAWER 572 DRUMRIGHT, OK 74030
(405) 567-1177