

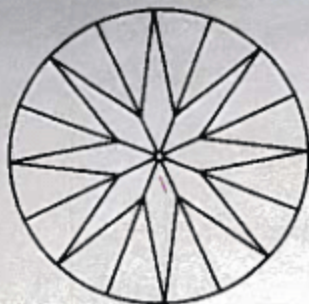
June 23, 2000

Shape and Cutting Style ..... ROUND BRILLIANT  
Measurements ..... 6.36 - 6.42 x 3.86 mm  
Weight ..... 1.00 carat

Proportions	
Depth	60.4 %
Table	63 %
Girdle	SLIGHTLY THICK TO THICK, FACETED
Culet	NONE

Finish	GOOD
Polish	VERY GOOD
Symmetry	VS2
Clarity Grade	E
Color Grade	FAINT
Fluorescence	

Comments:  
NONE

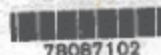


### KEY TO SYMBOLS

- Crystal Feather**

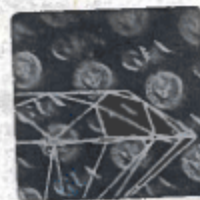
**New York Headquarters**  
580 Fifth Avenue | New York, NY 10036-4794  
T: 212-221-5858 | F: 212-575-3095

Carlsbad  
5355 Armada Drive | Carlsbad, CA 92008-4898  
T: 760-603-4500 | F: 760-603-1814



This Report is not a guarantee, valuation or appraisal. This Report contains only the characteristics of the diamond described herein after it has been graded, tested, examined and analyzed by GIA Gem Trade Laboratory under 10X magnification, and/or has been inscribed, using the techniques and equipment available to GIA Gem Trade Laboratory at the time of the examination and/or at the time of being inscribed, including fully corrected triplet loupe and binocular microscope, master color comparison diamonds, standardized viewing environment and light source, electronic carat balance, synthetic diamond screening device, high intensity short wave fluorescence imaging system, short wave ultraviolet transmission detection system, optical measuring device, micro laser inscribing device, ProportionScope®, ultraviolet lamp, millimeter gauge, and ancillary instruments as necessary. Red symbols denote internal characteristics (inclusions). Green or black symbols denote external characteristics (blemishes). Diagram is an approximate representation of the diamond, and symbols shown indicate type, position, and approximate size of clarity characteristics. All clarity characteristics may not be shown. Details of finish are not shown. The recipient of this Report may wish to consult a credentialed Jeweler or Gemologist about the importance and interrelationship of cut, color, clarity and carat weight.

GIA CLARITY SCALE		GIA COLOR SCALE	
FLAWLESS		D	
INTERMEDIATELY FLAWLESS		E	
VVS <sub>1</sub>	VERY VERY SLIGHTLY INCLUDED	F	
VVS <sub>2</sub>		G	
VS <sub>1</sub>		H	
VS <sub>2</sub>	VERY SLIGHTLY INCLUDED	I	
		J	
		K	
		L	
SI <sub>1</sub>	SLIGHTLY INCLUDED	M	
SI <sub>2</sub>		N	
		O	
		P	
		Q	
I <sub>1</sub>		R	
		S	
		T	
		U	
I <sub>2</sub>	INCLUDED	V	
		W	
		X	
		Y	
		Z	



IMPORTANT DOCUMENT, STORE SAFELY

The company features its life insurance, including life savings, annuity plans, retirement and disability benefits, as well as health and dental insurance.

NOTICE: IMPORTANT  
LIMITATIONS ON BACK

Copyright © 2000 GIA Gem Trade Laboratory



# GIA GEM TRADE LABORATORY

## DIAMOND GRADING REPORT

January 29, 2003

Shape and Cutting Style ..... ROUND BRILLIANT

Measurements ..... 8.22 - 8.33 x 5.20 mm

Weight ..... 2.13 carat

### Proportions

Depth ..... 62.8 %

Table ..... 56 %

Girdle ..... MEDIUM TO SLIGHTLY THICK, FACETED

Culet ..... VERY SMALL

### Finish

Polish ..... VERY GOOD

Symmetry ..... VERY GOOD

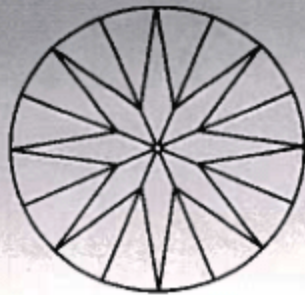
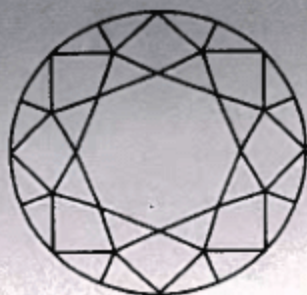
Clarity Grade ..... INTERNALLY FLAWLESS

Color Grade ..... D

Fluorescence ..... NONE

### Comments:

Minor details of polish are not shown.



### KEY TO SYMBOLS

### GIA CLARITY SCALE

FLAWLESS

INTERNALLY  
FLAWLESS

VVS<sub>1</sub>

VVS<sub>2</sub>

VS<sub>1</sub>

VS<sub>2</sub>

SI<sub>1</sub>

SI<sub>2</sub>

I<sub>1</sub>

I<sub>2</sub>

I<sub>3</sub>

VERY VERY  
SLIGHTLY  
INCLUDED

VERY SLIGHTLY  
INCLUDED

SLIGHTLY INCLUDED

INCLUDED

### GIA COLOR SCALE

D

E

F

G

H

I

J

K

L

M

N

O

P

Q

R

S

T

U

V

W

X

Y

Z

COLORED

NEAR COLORLESS

FAINT

VERY LIGHT

LIGHT

### New York Headquarters

580 Fifth Avenue | New York, NY 10036-4794  
T: 212-221-5858 | F: 212-575-3095

### Carlsbad

5355 Avenida Drive | Carlsbad, CA 92008-4699  
T: 760-603-4500 | F: 760-603-1814

117439801

This Report is not a guarantee, valuation or appraisal. This Report contains only the characteristics of the diamond described herein after it has been graded, tested, examined and analyzed by GIA Gem Trade Laboratory under 10X magnification, and/or has been inscribed, using the techniques and equipment available to GIA Gem Trade Laboratory at the time of the examination and/or at the time of being inscribed, including fully corrected triplet loupe and binocular microscope, master color comparison diamonds, standardized viewing environment and light source, electronic carat balance, synthetic diamond screening device, high intensity short wave fluorescence imaging system, short wave ultraviolet transmission detection system, optical measuring device, micro laser inscribing device, ProportionScope®, ultraviolet lamps, millimeter gauge, and ancillary instruments as necessary. Red symbols denote internal characteristics (inclusions). Green or black symbols denote external characteristics (blemishes). Diagram is an approximate representation of the diamond, and symbols shown indicate type, position, and approximate size of clarity characteristics. All clarity characteristics may not be shown. Details of finish are not shown. The recipient of this Report may wish to consult a credentialed Jeweler or Gemologist about the importance and interrelationship of cut, color, clarity and carat weight.



### IMPORTANT DOCUMENT, STORE SAFELY

The Institute adheres to strict standards, including the following: accuracy, honesty, objectivity, and ethical conduct, to ensure the highest quality and integrity of its services.

NOTICE: IMPORTANT LIMITATIONS ON BACK

COPYRIGHT © 2000 GEOLOGICAL INSTITUTE OF AMERICA, INC.



# GIA GEM TRADE LABORATORY

New York Headquarters  
580 Fifth Avenue | New York, NY 10036-4794  
T: 212-221-5858 | F: 212-575-3095

Carlsbad  
5355 Armada Drive | Carlsbad, CA 92008-4699  
T: 760-603-4500 | F: 760-603-1814

## DIAMOND GRADING REPORT

January 26, 2004

Shape and Cutting Style ..... **ROUND BRILLIANT**  
Measurements ..... **8.54 - 8.61 x 5.18 mm**  
Weight ..... **2.28 carat**

### Proportions

Depth ..... **60.4 %**  
Table ..... **57 %**  
Girdle ..... **MEDIUM, FACETED**  
Culet ..... **SMALL**

### Finish

Polish ..... **EXCELLENT**  
Symmetry ..... **EXCELLENT**

Clarity Grade ..... **INTERNALLY FLAWLESS**

Color Grade ..... **D**

Fluorescence ..... **FAINT**

### Comments:

Minor details of polish are not shown.

### GIA CLARITY SCALE

FLAWLESS  
INTERNALLY  
FLAWLESS

VVS<sub>1</sub>  
VVS<sub>2</sub>

VS<sub>1</sub>

VS<sub>2</sub>

SI<sub>1</sub>

SI<sub>2</sub>

I<sub>1</sub>

I<sub>2</sub>

I<sub>3</sub>

### GIA COLOR SCALE

D

E

F

G

H

I

J

K

L

M

N

O

P

Q

R

S

T

U

V

W

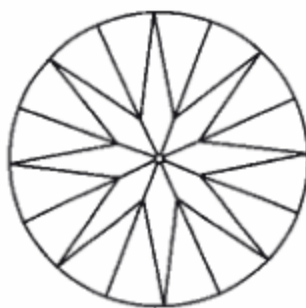
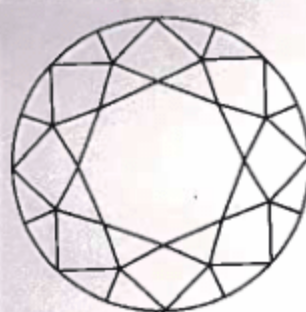
X

Y

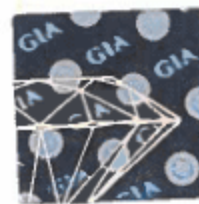
Z

148019601

This Report is not a guarantee, valuation or appraisal. This Report contains only the characteristics of the diamond described herein after it has been graded, tested, examined and analyzed by GIA Gem Trade Laboratory under 10X magnification, and/or has been inscribed using the techniques and equipment available to GIA Gem Trade Laboratory at the time of the examination and/or at the time of being inscribed, including fully corrected triplet loupe and binocular microscope, master color comparison diamonds, standardized viewing environment and light source, electronic carat balance, synthetic diamond screening device, high intensity short wave fluorescence imaging system, short wave ultraviolet transmission detection system, optical measuring device, micro laser inscribing device, ProportionScope®, ultraviolet lamps, millimeter gauge, and ancillary instruments as necessary. Red symbols denote internal characteristics (inclusions). Green or black symbols denote external characteristics (blemishes). Diagram is an approximate representation of the diamond, and symbols shown indicate type, position, and approximate size of clarity characteristics. All clarity characteristics may not be shown. Details of finish are not shown. The recipient of this Report may wish to consult a credentialed Jeweler or Gemologist about the importance and interrelationship of cut, color, clarity and carat weight.



### KEY TO SYMBOLS



IMPORTANT DOCUMENT, STORE SAFELY

NOTICE: IMPORTANT  
LIMITATIONS ON BACK

COPYRIGHT © 2000 GEOLOGICAL INSTITUTE OF AMERICA, INC.

GIA REPORT 13100048

EFTA00021580



# GIA GEM TRADE LABORATORY

New York Headquarters  
580 Fifth Avenue | New York, NY 10036-4794  
T: 212-221-5858 | F: 212-575-3095

Carlsbad  
5355 Armada Drive | Carlsbad, CA 92008-4699  
T: 760-603-4500 | F: 760-603-1814

## DIAMOND GRADING REPORT

November 26, 2002

Shape and Cutting Style ..... ROUND BRILLIANT

Measurements ..... 8.19 - 8.31 x 4.99 mm

Weight ..... 2.03 carat

### Proportions

Depth ..... 60.5 %

Table ..... 59 %

Girdle ..... VERY THIN TO MEDIUM, FACETED

Culet ..... VERY SMALL

### Finish

Polish ..... VERY GOOD

Symmetry ..... VERY GOOD

Clarity Grade ..... INTERNALLY FLAWLESS

Color Grade ..... D

Fluorescence ..... NONE

### Comments:

Minor details of polish are not shown.



168410602

This Report is not a guarantee, valuation or appraisal. This Report contains only the characteristics of the diamond described herein after it has been graded, tested, examined and analyzed by GIA Gem Trade Laboratory under 10X magnification, and/or has been inscribed, using the techniques and equipment available to GIA Gem Trade Laboratory, at the time of the examination and/or at the time of being inscribed, including fully corrected triplet loupe and binocular microscope, master color comparison diamonds, standardized viewing environment and light source, electronic carat balance, synthetic diamond screening device, high intensity short wave fluorescence imaging system, short wave ultraviolet transmission detection system, optical measuring device, micro laser inscribing device, ProportionScope®, ultraviolet lamps, millimeter gauge, and ancillary instruments as necessary. Red symbols denote internal characteristics (inclusions). Green or black symbols denote external characteristics (blemishes). Diagram is an approximate representation of the diamond, and symbols shown indicate type, position, and approximate size of clarity characteristics. All clarity characteristics may not be shown. Details of finish are not shown. The recipient of this Report may wish to consult a credentialed Jeweler or Gemologist about the importance and interrelationship of cut, color, clarity and carat weight.

### GIA CLARITY SCALE

FLAWLESS

INTERNALLY  
FLAWLESS

VVS<sub>1</sub>

VVS<sub>2</sub>

VS<sub>1</sub>

VS<sub>2</sub>

S<sub>1</sub>

S<sub>2</sub>

I<sub>1</sub>

I<sub>2</sub>

I<sub>3</sub>

VERY VERY  
SLIGHTLY  
INCLUDED

VERY SLIGHTLY  
INCLUDED

SLIGHTLY  
INCLUDED

SLIGHTLY  
INCLUDED

INCLUDED

INCLUDED

INCLUDED

INCLUDED

### GIA COLOR SCALE

D

E

F

G

H

I

J

K

L

M

N

O

P

Q

R

S

T

U

V

W

X

Y

Z

COLORED

NEAR COLORLESS

Faint

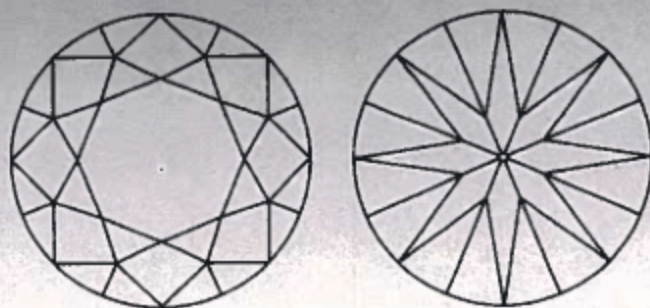
Very Light

Light

Light

Light

Light



### KEY TO SYMBOLS



IMPORTANT DOCUMENT. STORE SAFELY

The accuracy of this report is based on the information provided by the client. GIA Gem Trade Laboratory does not assume any responsibility for the accuracy of this report if the client provides false information.

NOTICE: IMPORTANT  
LIMITATIONS ON BACK

COPYRIGHT ©2000 GEMOLOGICAL INSTITUTE OF AMERICA, INC.



# GIA GEM TRADE LABORATORY

New York Headquarters  
580 Fifth Avenue | New York, NY 10036-4794  
T: 212-221-5858 | F: 212-575-3095

Carlsbad  
5355 Armada Drive | Carlsbad, CA 92008-4699  
T: 760-603-4500 | F: 760-603-1814

## DIAMOND GRADING REPORT

September 04, 2003

Shape and Cutting Style ..... **ROUND BRILLIANT**  
Measurements ..... **6.63 - 6.70 x 3.96 mm**  
Weight ..... **1.06 carat**

### Proportions

Depth ..... **59.4 %**  
Table ..... **58 %**  
Girdle ..... **THIN TO SLIGHTLY THICK, FACETED**  
Culet ..... **NONE**

### Finish

Polish ..... **VERY GOOD**  
Symmetry ..... **GOOD**

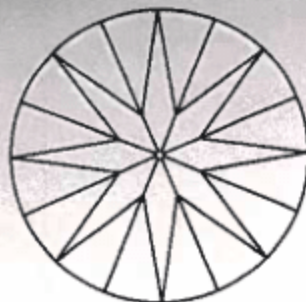
Clarity Grade ..... **SI1**

Color Grade ..... **G**

Fluorescence ..... **NONE**

### Comments:

Additional clouds are not shown.



### KEY TO SYMBOLS

○ Cloud

### GIA CLARITY SCALE

FLAWLESS  
INTERNALLY  
FLAWLESS

VVS<sub>1</sub>

VVS<sub>2</sub>

VS<sub>1</sub>

VS<sub>2</sub>

SI<sub>1</sub>

SI<sub>2</sub>

I<sub>1</sub>

I<sub>2</sub>

I<sub>3</sub>

### GIA COLOR SCALE

D

E

F

G

H

I

J

K

L

M

N

O

P

Q

R

S

T

U

V

W

X

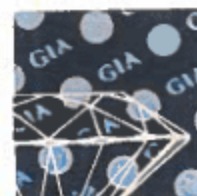
Y

Z



203882802

This Report is not a guarantee, valuation or appraisal. This Report contains only the characteristics of the diamond described herein after it has been graded, tested, examined and analyzed by GIA Gem Trade Laboratory under 10X magnification, and/or has been inscribed, using the techniques and equipment available to GIA Gem Trade Laboratory at the time of the examination and/or at the time of being inscribed, including fully corrected triplet loupe and binocular microscope, master color-comparison diamonds, standardized viewing environment and light source, electronic carat balance, synthetic diamond screening device, high intensity short wave fluorescence imaging system, short wave ultraviolet transmission detection system, optical measuring device, micro laser inscribing device, ProportionScope®, ultraviolet lamps, millimeter gauge, and ancillary instruments as necessary. Red symbols denote internal characteristics (inclusions). Green or black symbols denote external characteristics (blemishes). Diagram is an approximate representation of the diamond, and symbols shown indicate type, position, and approximate size of clarity characteristics. All clarity characteristics may not be shown. Details of finish are not shown. The recipient of this Report may wish to consult a credentialed Jeweler or Gemologist about the importance and interrelationship of cut, color, clarity and carat weight.



IMPORTANT DOCUMENT, STORE SAFELY

The security features in this document, including this hologram, are not transferable. Any attempt to reproduce, alter, or otherwise use these features without permission is strictly prohibited.

NOTICE: IMPORTANT LIMITATIONS ON BACK

COPYRIGHT ©2000 GEMOLOGICAL INSTITUTE OF AMERICA, INC.



# GIA GEM TRADE LABORATORY

New York Headquarters  
580 Fifth Avenue | New York, NY 10036-4794  
T: 212-221-5858 | F: 212-575-3095

Carlsbad  
5355 Armada Drive | Carlsbad, CA 92008-4699  
T: 760-603-4500 | F: 760-603-1814

## DIAMOND GRADING REPORT

September 05, 2003

Shape and Cutting Style ..... ROUND BRILLIANT  
Measurements ..... 6.40 - 6.44 x 4.06 mm  
Weight ..... 1.03 carat

### Proportions

Depth ..... 63.2 %  
Table ..... 57 %  
Girdle ..... MEDIUM TO SLIGHTLY THICK, FACETED  
Culet ..... NONE

### Finish

Polish ..... GOOD  
Symmetry ..... GOOD

Clarity Grade ..... VS2

Color Grade ..... D

Fluorescence ..... NONE

### Comments:

Pinpoints are not shown.

### GIA CLARITY SCALE

FLAWLESS  
INTERIALLY  
FLAWLESS

VVS<sub>1</sub>

VVS<sub>2</sub>

VS<sub>1</sub>

VS<sub>2</sub>

SI<sub>1</sub>

SI<sub>2</sub>

I<sub>1</sub>

I<sub>2</sub>

I<sub>3</sub>

### GIA COLOR SCALE

COLORED

NEAR COLORED

FLAW

VERY LIGHT

LIGHT

D

E

F

G

H

I

J

K

L

M

N

O

P

Q

R

S

T

U

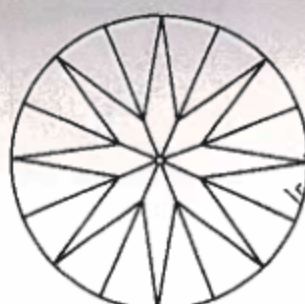
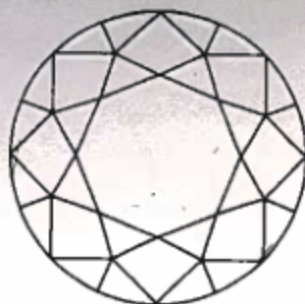
V

W

X

Y

Z



### KEY TO SYMBOLS

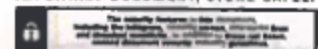
- ~ Feather
- ~ Needle
- ~ Indented Natural



This Report is not a guarantee, valuation or appraisal. This Report contains only the characteristics of the diamond described herein after it has been graded, tested, examined and analyzed by GIA Gem Trade Laboratory under 10X magnification, and/or has been inscribed, using the techniques and equipment available to GIA Gem Trade Laboratory at the time of the examination and/or at the time of being inscribed, including fully corrected triplet loupe and binocular microscope, master color comparison diamonds, standardized viewing environment and light source, electronic carat balance, synthetic diamond screening device, high intensity short wave fluorescence imaging system, short wave ultraviolet transmission detection system, optical measuring device, micro laser inscribing device, ProportionScope®, ultraviolet lamps, millimeter gauge, and ancillary instruments as necessary. Red symbols denote internal characteristics (inclusions). Green or black symbols denote external characteristics (blemishes). Diagram is an approximate representation of the diamond, and symbols shown indicate type, position, and approximate size of clarity characteristics. All clarity characteristics may not be shown. Details of finish are not shown. The recipient of this Report may wish to consult a credentialed Jeweler or Gemologist about the importance and interrelationship of cut, color, clarity and carat weight.



IMPORTANT DOCUMENT, STORE SAFELY



NOTICE: IMPORTANT  
LIMITATIONS ON BACK

COPYRIGHT ©2000 GEMOLOGICAL INSTITUTE OF AMERICA, INC.



# GIA GEM TRADE LABORATORY

New York Headquarters  
580 Fifth Avenue | New York, NY 10036-4794  
T: 212-221-5858 | F: 212-575-3095

Carlsbad  
5355 Armada Drive | Carlsbad, CA 92008-4699  
T: 760-603-4500 | F: 760-603-1814

## DIAMOND GRADING REPORT

September 04, 2003

Shape and Cutting Style ..... ROUND BRILLIANT

Measurements ..... 6.47 - 6.55 x 4.00 mm

Weight ..... 1.01 carat

### Proportions

Depth ..... 61.4 %

Table ..... 57 %

Girdle ..... VERY THIN TO MEDIUM, FACETED

Culet ..... NONE

### Finish

Polish ..... VERY GOOD

Symmetry ..... VERY GOOD

Clarity Grade ..... VS2

Color Grade ..... D

Fluorescence ..... NONE

### Comments:

NONE

### GIA CLARITY SCALE

FLAWLESS

INTERNALLY  
FLAWLESS

VVS<sub>1</sub>

VVS<sub>2</sub>

VS<sub>1</sub>

VS<sub>2</sub>

SI<sub>1</sub>

SI<sub>2</sub>

I<sub>1</sub>

I<sub>2</sub>

I<sub>3</sub>

### GIA COLOR SCALE

D

E

F

G

H

I

J

K

L

M

N

O

P

Q

R

S

T

U

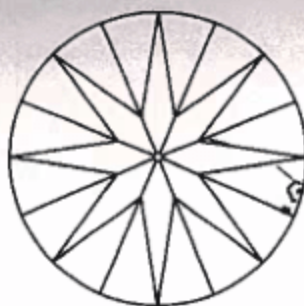
V

W

X

Y

Z

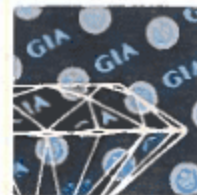


### KEY TO SYMBOLS

- Crystal
- △ Indented Natural
- ~ Feather
- Pinpoint
- △ Extra Facet

203879802

This Report is not a guarantee, valuation or appraisal. This Report contains only the characteristics of the diamond described herein after it has been graded, tested, examined and analyzed by GIA Gem Trade Laboratory under 10X magnification, and/or has been inscribed, using the techniques and equipment available to GIA Gem Trade Laboratory at the time of the examination and/or at the time of being inscribed, including fully corrected triplet loupe and binocular microscope, master color comparison diamonds, standardized viewing environment and light source, electronic carat balance, synthetic diamond screening device, high intensity short wave fluorescence imaging system, short wave ultraviolet transmission detection system, optical measuring device, micro laser inscribing device, ProportionScope<sup>®</sup>, ultraviolet lamps, millimeter gauge, and ancillary instruments as necessary. Red symbols denote internal characteristics (inclusions). Green or black symbols denote external characteristics (blemishes). Diagram is an approximate representation of the diamond, and symbols shown indicate type, position, and approximate size of clarity characteristics. All clarity characteristics may not be shown. Details of finish are not shown. The recipient of this Report may wish to consult a credentialed Jeweler or Gemologist about the importance and interrelationship of cut, color, clarity and carat weight.



### IMPORTANT DOCUMENT, STORE SAFELY

The recipient of this document is responsible for the safekeeping of this document, including the original, security copies, and/or other copies, and should destroy the original document if it is lost or stolen.

NOTICE: IMPORTANT  
LIMITATIONS ON BACK

COPYRIGHT ©2000 GEMOLOGICAL INSTITUTE OF AMERICA, INC.

GIA REPORT 12813010

EFTA00021584



# GIA GEM TRADE LABORATORY

New York Headquarters  
580 Fifth Avenue | New York, NY 10035-4794  
T: 212-221-5858 | F: 212-575-3095

Carlsbad  
5355 Armada Drive | Carlsbad, CA 92008-4699  
T: 760-603-4500 | F: 760-603-1814

## DIAMOND GRADING REPORT

September 05, 2003

Shape and Cutting Style ..... ROUND BRILLIANT

Measurements ..... 6.34 - 6.38 x 3.91 mm

Weight ..... 1.00 carat

### Proportions

Depth ..... 61.5 %

Table ..... 59 %

Girdle ..... MEDIUM TO THICK, FACETED

Culet ..... NONE

### Finish

Polish ..... VERY GOOD

Symmetry ..... VERY GOOD

Clarity Grade ..... VS2

Color Grade ..... E

Fluorescence ..... FAINT

### Comments:

NONE

### GIA CLARITY SCALE

FLAWLESS

INTERNALLY  
FLAWLESS

VVS<sub>1</sub>

VVS<sub>2</sub>

VS<sub>1</sub>

VS<sub>2</sub>

SI<sub>1</sub>

SI<sub>2</sub>

I<sub>1</sub>

I<sub>2</sub>

I<sub>3</sub>

VERY VERY  
SLIGHTLY  
INCLUDED

VERY SLIGHTLY  
INCLUDED

SLIGHTLY INCLUDED

INCLUDED

### GIA COLOR SCALE

D

E

F

G

H

I

J

K

L

M

N

O

P

Q

R

S

T

U

V

W

X

Y

Z

COLORLESS

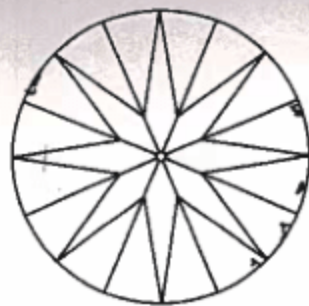
NEAR COLORLESS

FAINT

VERY LIGHT

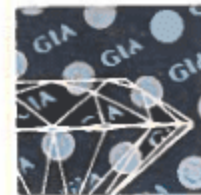
LIGHT

This Report is not a guarantee, valuation or appraisal. This Report contains only the characteristics of the diamond described herein after it has been graded, tested, examined and analyzed by GIA Gem Trade Laboratory under 10X magnification, and/or has been inscribed, using the techniques and equipment available to GIA Gem Trade Laboratory at the time of the examination and/or at the time of being inscribed, including fully corrected triplet loupe and binocular microscope, master color comparison diamonds, standardized viewing environment and light source, electronic carat balance, synthetic diamond screening device, high intensity short wave fluorescence imaging system, short wave ultraviolet transmission detection system, optical measuring device, micro laser inscribing device, ProportionScope® ultraviolet lamp, millimeter gauge, and ancillary instruments as necessary. Red symbols denote internal characteristics (inclusions). Green or black symbols denote external characteristics (blemishes). Diagram is an approximate representation of the diamond, and symbols shown indicate type, position, and approximate size of clarity characteristics. All clarity characteristics may not be shown. Details of finish are not shown. The recipient of this Report may wish to consult a credentialed Jeweler or Gemologist about the importance and interrelationship of cut, color, clarity and carat weight.



### KEY TO SYMBOLS

- Crystal
- Feather
- Pinpoint
- Indented Natural



IMPORTANT DOCUMENT, STORE SAFELY

This report is not a guarantee, valuation or appraisal. It contains only the characteristics of the diamond described herein after it has been graded, tested, examined and analyzed by GIA Gem Trade Laboratory under 10X magnification, and/or has been inscribed, using the techniques and equipment available to GIA Gem Trade Laboratory at the time of the examination and/or at the time of being inscribed, including fully corrected triplet loupe and binocular microscope, master color comparison diamonds, standardized viewing environment and light source, electronic carat balance, synthetic diamond screening device, high intensity short wave fluorescence imaging system, short wave ultraviolet transmission detection system, optical measuring device, micro laser inscribing device, ProportionScope® ultraviolet lamp, millimeter gauge, and ancillary instruments as necessary. Red symbols denote internal characteristics (inclusions). Green or black symbols denote external characteristics (blemishes). Diagram is an approximate representation of the diamond, and symbols shown indicate type, position, and approximate size of clarity characteristics. All clarity characteristics may not be shown. Details of finish are not shown. The recipient of this Report may wish to consult a credentialed Jeweler or Gemologist about the importance and interrelationship of cut, color, clarity and carat weight.

NOTICE: IMPORTANT  
LIMITATIONS ON BACK

COPYRIGHT ©2000 GEMOLOGICAL INSTITUTE OF AMERICA, INC.

GIA REPORT 12813216

EFTA00021585



**GIA**  
GEM TRADE LABORATORY

New York Headquarters  
580 Fifth Avenue | New York, NY 10036-4794  
T: 212-221-5858 | F: 212-575-3085

Carlsbad  
5355 Armada Drive | Carlsbad, CA 92008-4689  
T: 760-603-4500 | F: 760-603-1814

# DIAMOND GRADING REPORT

June 23, 2000

Shape and Cutting Style ..... **ROUND BRILLIANT**  
Measurements ..... **6.29 - 6.34 x 4.00 mm**  
Weight ..... **1.00 carat**

## Proportions

Depth ..... **63.3 %**  
Table ..... **61 %**  
Girdle ..... **THICK TO VERY THICK, FACETED**  
Culet ..... **NONE**

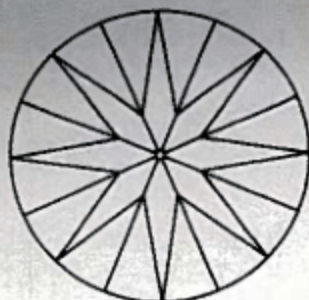
## Finish

Polish ..... **VERY GOOD**  
Symmetry ..... **VERY GOOD**

Clarity Grade ..... **SI1**  
Color Grade ..... **E**  
Fluorescence ..... **NONE**

## Comments:

Clouds are not shown.



## KEY TO SYMBOLS

- Crystal
- Needle

## GIA CLARITY SCALE

FLAWLESS  
INTERNALLY  
FLAWLESS

VVS<sub>1</sub>

VVS<sub>2</sub>

VS<sub>1</sub>

VS<sub>2</sub>

SI<sub>1</sub>

SI<sub>2</sub>

I<sub>1</sub>

I<sub>2</sub>

I<sub>3</sub>

VERY VERY  
SLIGHTLY  
INCLUDED

VERY SLIGHTLY  
INCLUDED

SLIGHTLY  
INCLUDED

INCLUDED

## GIA COLOR SCALE

D

E

F

G

H

I

J

K

L

M

N

O

P

Q

R

S

T

U

V

W

X

Y

Z

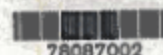
COLORED

NEAR COLORLESS

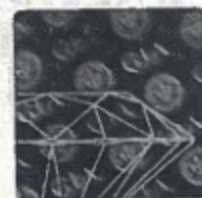
FANT

VERY LIGHT

LIGHT



This Report is not a guarantee, valuation or appraisal. This Report contains only the characteristics of the diamond described herein after it has been graded, tested, examined and analyzed by GIA Gem Trade Laboratory under 10X magnification, and/or has been inscribed, using the techniques and equipment available to GIA Gem Trade Laboratory at the time of the examination and/or at the time of being inscribed, including fully corrected triplet loupe and binocular microscope, master color comparison diamonds, standardized viewing environment and light source, electronic carat balance, synthetic diamond screening device, high intensity short wave fluorescence imaging system, short wave ultraviolet transmission detection system, optical measuring device, micro laser inscribing device, ProportionScope®, ultraviolet lamp, millimeter gauge, and ancillary instruments as necessary. Red symbols denote internal characteristics (inclusions). Green or black symbols denote external characteristics (blemishes). Diagram is an approximate representation of the diamond, and symbols shown indicate type, position, and approximate size of clarity characteristics. All clarity characteristics may not be shown. Details of finish are not shown. The recipient of this Report may wish to consult a credentialed Jeweler or Gemologist about the importance and interrelationship of cut, color, clarity and carat weight.



IMPORTANT DOCUMENT, STORE SAFELY

The information contained in this document is the property of GIA Gem Trade Laboratory. It is to be used for the purpose of identifying and grading diamonds only. It is not to be used for any other purpose. It is to be stored in a safe place. It is to be protected from damage. It is to be kept confidential. It is to be used only for the purpose for which it was issued.

NOTICE: IMPORTANT LIMITATIONS ON BACK

COPYRIGHT ©2000 GIA GEM TRADE LABORATORY



# GIA GEM TRADE LABORATORY

New York Headquarters  
580 Fifth Avenue | New York, NY 10036-4794  
T: 212-221-5858 | F: 212-675-3095

Carlsbad  
5355 Armada Drive | Carlsbad, CA 92008-4699  
T: 760-603-4500 | F: 760-603-1814

## DIAMOND GRADING REPORT

September 05, 2003

Shape and Cutting Style ..... ROUND BRILLIANT  
Measurements ..... 6.22 - 6.29 x 4.02 mm  
Weight ..... 1.00 carat

### Proportions

Depth ..... 64.3 %  
Table ..... 80 %  
Girdle ..... MEDIUM TO VERY THICK, FACETED  
Culet ..... NONE

### Finish

Polish ..... VERY GOOD  
Symmetry ..... GOOD

Clarity Grade ..... VS2  
Color Grade ..... F  
Fluorescence ..... NONE

### Comments:

Pinpoints are not shown.

### GIA CLARITY SCALE

FLAWLESS  
INTERNALLY  
FLAWLESS

VVS<sub>1</sub>

VVS<sub>2</sub>

VS<sub>1</sub>

VS<sub>2</sub>

SI<sub>1</sub>

SI<sub>2</sub>

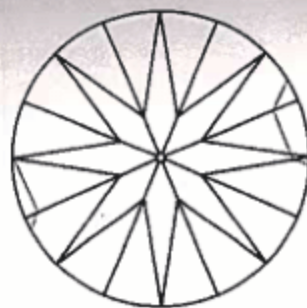
I<sub>1</sub>

I<sub>2</sub>

I<sub>3</sub>

### GIA COLOR SCALE

D  
E  
F  
G  
H  
I  
J  
K  
L  
M  
N  
O  
P  
Q  
R  
S  
T  
U  
V  
W  
X  
Y  
Z

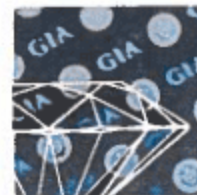


### KEY TO SYMBOLS

- Crystal
- ~ Natural



This Report is not a guarantee, valuation or appraisal. This Report contains only the characteristics of the diamond described herein after it has been graded, tested, examined and analyzed by GIA Gem Trade Laboratory under 10X magnification, and/or has been inscribed, using the techniques and equipment available to GIA Gem Trade Laboratory at the time of the examination and/or at the time of being inscribed, including fully corrected triplet loupe and binocular microscope, master color comparison diamonds, standardized viewing environment and light source, electronic carat balance, synthetic diamond screening device, high intensity short wave fluorescence imaging system, short wave ultraviolet transmission detection system, optical measuring device, micro laser inscribing device, ProportionScope®, ultraviolet lamps, millimeter gauge, and ancillary instruments as necessary. Red symbols denote internal characteristics (inclusions). Green or black symbols denote external characteristics (blemishes). Diagram is an approximate representation of the diamond, and symbols shown indicate type, position, and approximate size of clarity characteristics. All clarity characteristics may not be shown. Details of finish are not shown. The recipient of this Report may wish to consult a credentialed Jeweler or Gemologist about the importance and interrelationship of cut, color, clarity and carat weight.



### IMPORTANT DOCUMENT, STORE SAFELY

The security features in this document, including the hologram, security pattern, ultraviolet lines and chemical sensitivity, is subject to state and federal, revised document security technology guidelines.

NOTICE: IMPORTANT  
LIMITATIONS ON BACK

COPYRIGHT © 2003 GEMOLOGICAL INSTITUTE OF AMERICA, INC.



# GIA GEM TRADE LABORATORY

## DIAMOND GRADING REPORT

June 26, 2000

Shape and Cutting Style ..... ROUND BRILLIANT  
Measurements ..... 6.42 - 6.46 x 3.96 mm  
Weight ..... 1.00 carat

### Proportions

Depth ..... 61.5 %  
Table ..... 61 %  
Girdle ..... MEDIUM, FACETED  
Culet ..... NONE

### Finish

Polish ..... VERY GOOD  
Symmetry ..... VERY GOOD

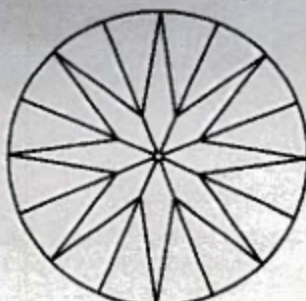
Clarity Grade ..... SI1

Color Grade ..... E

Fluorescence ..... NONE

### Comments:

Additional clouds are not shown.



### KEY TO SYMBOLS

- Cloud
- Crystal

### GIA CLARITY SCALE

FLAWLESS  
INTERNALLY  
FLAWLESS

VVS<sub>1</sub>

VVS<sub>2</sub>

VS<sub>1</sub>

VS<sub>2</sub>

SI<sub>1</sub>

SI<sub>2</sub>

I<sub>1</sub>

I<sub>2</sub>

I<sub>3</sub>

### GIA COLOR SCALE

D

E

F

G

H

I

J

K

L

M

N

O

P

Q

R

S

T

U

V

W

X

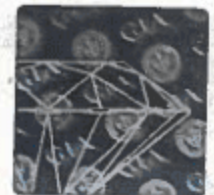
Y

Z



78131702

This Report is not a guarantee, valuation or appraisal. This Report contains only the characteristics of the diamond described herein after it has been graded, tested, examined and analyzed by GIA Gem Trade Laboratory under 10X magnification, and/or has been inscribed, using the techniques and equipment available to GIA Gem Trade Laboratory at the time of the examination and/or at the time of being inscribed, including fully corrected triplet loupe and binocular microscope, master color comparison diamonds, standardized viewing environment and light source, electronic carat balance, synthetic diamond screening device, high intensity short wave fluorescence imaging system, short wave ultraviolet transmission detection system, optical measuring device, micro laser inscribing device, ProportionScope®, ultraviolet lamps, millimeter gauge, and ancillary instruments as necessary. Red symbols denote internal characteristics (inclusions). Green or black symbols denote external characteristics (blemishes). Diagram is an approximate representation of the diamond, and symbols shown indicate type, position, and approximate size of clarity characteristics. All clarity characteristics may not be shown. Details of finish are not shown. The recipient of this Report may wish to consult a credentialed Jeweler or Gemologist about the importance and interrelationship of cut, color, clarity and carat weight.



### IMPORTANT DOCUMENT, STORE SAFELY

The security features in this document include the ultraviolet security device, ultraviolet lamp, and other security features. To ensure the security of this document, please store it in a secure location.

NOTICE: IMPORTANT LIMITATIONS ON BACK

COPYRIGHT ©2000 GIA GEM TRADE LABORATORY

GIA REPORT 11143341

EFTA00021588



# GIA GEM TRADE LABORATORY

## DIAMOND GRADING REPORT

January 15, 2001

Shape and Cutting Style ..... ROUND BRILLIANT

Measurements ..... 6.55 - 6.56 x 4.13 mm

Weight ..... 1.08 carat

## Proportions

Depth ..... 63.0 %

Table ..... 156 %

Girdle ..... VERY THIN TO SLIGHTLY THICK, FACETED

Culet ..... NONE

## Finish

Polish ..... VERY GOOD

Symmetry ..... VERY GOOD

Clarity Grade ..... SI1

Color Grade ..... G

Fluorescence ..... NONE

## Comments:

Pinpoints are not shown.

Surface graining is not shown.

GIA  
CLARITY  
SCALE

FLAWLESS

INTERNALLY  
FLAWLESSVVS<sub>1</sub>VVS<sub>2</sub>VS<sub>1</sub>VS<sub>2</sub>SI<sub>1</sub>SI<sub>2</sub>I<sub>1</sub>I<sub>2</sub>I<sub>3</sub>VERY VERY  
SLIGHTLY  
INCLUDESVERY SLIGHTLY  
INCLUDESSLIGHTLY  
INCLUDES

INCLUDES

GIA  
COLOR  
SCALE

D

E

F

G

H

I

J

K

L

M

N

O

P

Q

R

S

T

U

V

W

X

Y

Z

COLORLESS

NEAR COLORLESS

FAINT

VERY LIGHT

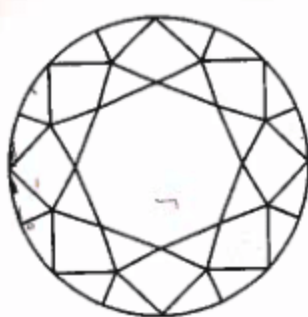
LIGHT

New York Headquarters  
580 Fifth Avenue | New York, NY 10036-4794  
T: 212-221-5858 | F: 212-575-3085

Carlsbad  
5355 Armada Drive | Carlsbad, CA 92008-4539  
T: 760-603-4500 | F: 760-603-1814



This Report is not a guarantee, valuation or appraisal. This Report contains only the characteristics of the diamond described herein after it has been graded, tested, examined and analyzed by GIA Gem Trade Laboratory under 10X magnification, and/or has been inscribed, using the techniques and equipment available to GIA Gem Trade Laboratory at the time of the examination and/or at the time of being inscribed, including fully corrected triplet loupe and binocular microscope, master color comparison diamonds, standardized viewing environment and light source, electronic carat balance, synthetic diamond screening device, high intensity short wave fluorescence imaging system, short wave ultraviolet transmission detection system, optical measuring device, micro laser inscribing device, ProportionScope®, ultraviolet lamps, millimeter gauge, and ancillary instruments as necessary. Red symbols denote internal characteristics (inclusions). Green or black symbols denote external characteristics (blemishes). Diagram is an approximate representation of the diamond, and symbols shown indicate type, position, and approximate size of clarity characteristics. All clarity characteristics may not be shown. Details of finish are not shown. The recipient of this Report may wish to consult a credentialed Jeweler or Gemologist about the importance and interrelationship of cut, color, clarity and carat weight.



## KEY TO SYMBOLS

- Feather
- Crystal
- Cloud
- Cavity

IMPORTANT DOCUMENT, STORE SAFELY

This document is subject to the provisions of the GIA Gem Trade Laboratory's Terms and Conditions, which are available on the GIA website at [www.gia.edu/terms](http://www.gia.edu/terms).

NOTICE: IMPORTANT  
LIMITATIONS ON BACK

COPYRIGHT ©2000 GEMOLOGICAL INSTITUTE OF AMERICA, INC.



# GIA GEM TRADE LABORATORY

New York Headquarters  
580 Fifth Avenue | New York, NY 10036-4794  
T: 212-221-5858 | F: 212-575-3055

Carlsbad  
5355 Armada Drive | Carlsbad, CA 92008-4699  
T: 760-603-4500 | F: 760-603-1814

## DIAMOND GRADING REPORT

June 23, 2000

Shape and Cutting Style ..... **ROUND BRILLIANT**  
Measurements ..... **6.28 - 6.37 x 3.93 mm**  
Weight ..... **1.00 carat**

### Proportions

Depth ..... **62.1 %**  
Table ..... **55 %**  
Girdle ..... **SLIGHTLY THICK TO VERY THICK, FACETED**

Culet ..... **SMALL**

### Finish

Polish ..... **VERY GOOD**  
Symmetry ..... **GOOD**

Clarity Grade ..... **S11**

Color Grade ..... **E**

Fluorescence ..... **NONE**

### Comments:

Clouds are not shown.

### GIA CLARITY SCALE

FLAWLESS  
INTERNALLY  
FLAWLESS

VVS<sub>1</sub>

VVS<sub>2</sub>

VS<sub>1</sub>

VS<sub>2</sub>

S1<sub>1</sub>

S1<sub>2</sub>

I<sub>1</sub>

I<sub>2</sub>

I<sub>3</sub>

### GIA COLOR SCALE

COLORED

NEAR COLORLESS

FAINT

VERY LIGHT

LIGHT

D

E

F

G

H

I

J

K

L

M

N

O

P

Q

R

S

T

U

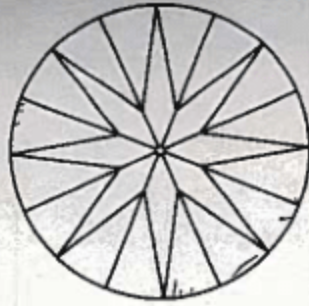
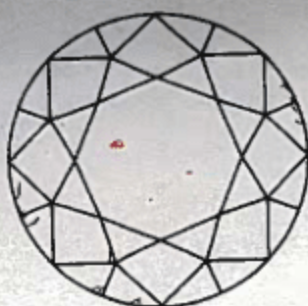
V

W

X

Y

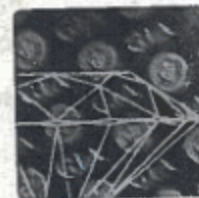
Z



### KEY TO SYMBOLS

- Crystal
- ~ Feather
- △ Natural
- △ Extra Facet

This Report is not a guarantee, valuation or appraisal. This Report contains only the characteristics of the diamond described herein after it has been graded, tested, examined and analyzed by GIA Gem Trade Laboratory under 10X magnification, and/or has been inscribed, using the techniques and equipment available to GIA Gem Trade Laboratory at the time of the examination and/or at the time of being inscribed, including fully corrected triplet loupe and binocular microscope, master color comparison diamonds, standardized viewing environment and light source, electronic carat balance, synthetic diamond screening device, high intensity short wave fluorescence imaging system, short wave ultraviolet transmission detection system, optical measuring device, micro laser inscribing device, ProportionScope®, ultraviolet lamps, millimeter gauge, and ancillary instruments as necessary. Red symbols denote internal characteristics (inclusions). Green or black symbols denote external characteristics (blemishes). Diagram to an approximate representation of the diamond, and symbols shown indicate type, position, and approximate size of clarity characteristics. All clarity characteristics may not be shown. Details of finish are not shown. The recipient of this Report may wish to consult a credentialed Jeweler or Gemologist about the importance and interrelationship of cut, color, clarity and carat weight.



IMPORTANT DOCUMENT, STORE SAFELY

The accuracy of this document is dependent on the accuracy of the information provided by the client. GIA Gem Trade Laboratory is not responsible for errors or omissions in this document.

NOTICE: IMPORTANT LIMITATIONS ON BACK

COPYRIGHT ©2000 GIA GEM TRADE LABORATORY

GIA REPORT 11143350

EFTA00021590



# GIA GEM TRADE LABORATORY

New York Headquarters  
580 Fifth Avenue | New York, NY 10036-4794  
T: 212-221-5858 | F: 212-575-3085

Carlsbad  
5355 Armada Drive | Carlsbad, CA 92008-4699  
T: 760-603-4500 | F: 760-603-1814

## DIAMOND GRADING REPORT

January 15, 2001

Shape and Cutting Style ..... **ROUND BRILLIANT**

Measurements ..... **6.35 - 6.41 x 4.02 mm**

Weight ..... **1.01 carat**

### Proportions

Depth ..... **63.0 %**

Table ..... **58 %**

Girdle ..... **MEDIUM TO SLIGHTLY THICK, FACETED**

Culet ..... **NONE**

### Finish

Polish ..... **GOOD**

Symmetry ..... **GOOD**

Clarity Grade ..... **SI1**

Color Grade ..... **E**

Fluorescence ..... **NONE**

### Comments:

**NONE**

### GIA CLARITY SCALE

FLAWLESS

INTERNALLY  
FLAWLESS

VVS<sub>1</sub>

VVS<sub>2</sub>

VS<sub>1</sub>

VS<sub>2</sub>

SI<sub>1</sub>

SI<sub>2</sub>

I<sub>1</sub>

I<sub>2</sub>

I<sub>3</sub>

VERY VERY  
SLIGHTLY  
INCLUDED

VERY SLIGHTLY  
INCLUDED

SLIGHTLY  
INCLUDED

INCLUDED

### GIA COLOR SCALE

D

E

F

G

H

I

J

K

L

M

N

O

P

Q

R

S

T

U

V

W

X

Y

Z

COLORED

NEAR COLORED

FAIR

POOR

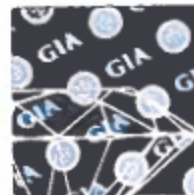
VERY POOR

SLIGHT

MODERATE

SEVERE

This Report is not a guarantee, valuation or appraisal. This Report contains only the characteristics of the diamond described herein after it has been graded, tested, examined and analyzed by GIA Gem Trade Laboratory under 10X magnification, and/or has been inscribed using the techniques and equipment available to GIA Gem Trade Laboratory at the time of the examination and/or at the time of being inscribed, including fully corrected triplet loupe and binocular microscope, master color comparison diamonds, standardized viewing environment and light source, electronic carat balance, synthetic diamond screening device, high intensity short wave fluorescence imaging system, short wave ultraviolet transmission detection system, optical measuring device, micro laser inscribing device, ProportionScope®, ultraviolet lamps, millimeter gauge, and ancillary instruments as necessary. Red symbols denote internal characteristics (inclusions). Green or black symbols denote external characteristics (blemishes). Diagram is an approximate representation of one diamond, and symbols shown indicate type, position, and approximate size of clarity characteristics. All clarity characteristics may not be shown. Details of finish are not shown. The recipient of this Report may wish to consult a credentialed Jeweler or Gemologist about the importance and interrelationship of cut, color, clarity and carat weight.



IMPORTANT DOCUMENT, STORE SAFELY

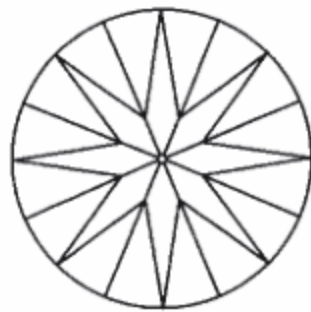
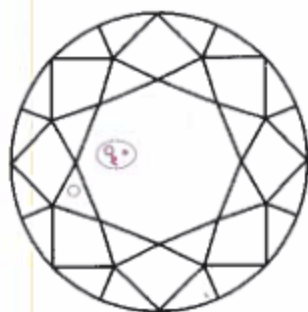
The property belongs to the client. This report, including the findings, remains the property of GIA. It is not to be reproduced, stored, or transmitted in any form or by any means, electronic or mechanical, including photocopying, recording, or by any information storage and retrieval system, without prior written permission from GIA.

NOTICE: IMPORTANT  
LIMITATIONS ON BACK

COPYRIGHT ©2000 GEMOLOGICAL INSTITUTE OF AMERICA, INC.

### KEY TO SYMBOLS

- Crystal
- Cloud
- ~ Needle
- ~ Feather







# GIA GEM TRADE LABORATORY

## DIAMOND GRADING REPORT

March 22, 2001

Shape and Cutting Style ..... OVAL BRILLIANT

Measurements ..... 7.34 x 5.86 x 3.58 mm

Weight ..... 1.00 carat

### Proportions

Depth ..... 61.1 %

Table ..... 53.9 %

Girdle ..... MEDIUM TO SLIGHTLY THICK, FACETED

Culet ..... NONE

### Finish

Polish ..... GOOD

Symmetry ..... GOOD

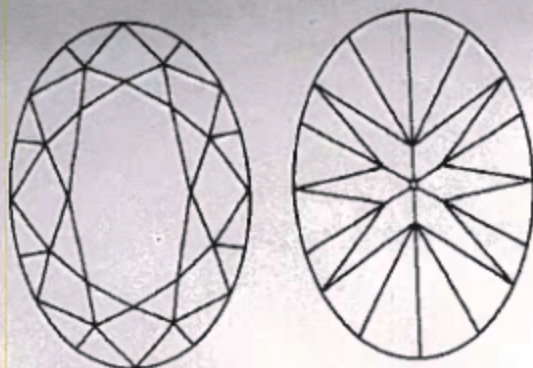
Clarity Grade ..... INTERNALLY FLAWLESS

Color Grade ..... E

Fluorescence ..... NONE

### Comments:

NONE



### KEY TO SYMBOLS

^ Extra Facet

### GIA CLARITY SCALE

FLAWLESS  
INTERNALLY  
FLAWLESS

VVS<sub>1</sub>

VVS<sub>2</sub>

VS<sub>1</sub>

VS<sub>2</sub>

SI<sub>1</sub>

SI<sub>2</sub>

I<sub>1</sub>

I<sub>2</sub>

I<sub>3</sub>

### GIA COLOR SCALE

D

E

F

G

H

I

J

K

L

M

N

O

P

Q

R

S

T

U

V

W

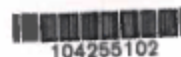
X

Y

Z

New York Headquarters  
580 Fifth Avenue | New York, NY 10035-4794  
T: 212-221-5858 | F: 212-575-3095

Carlsbad  
5355 Armada Drive | Carlsbad, CA 92008-4699  
T: 760-603-4500 | F: 760-603-1814



This Report is not a guarantee, valuation or appraisal. This Report contains only the characteristics of the diamond described herein after it has been graded, tested, examined and analyzed by GIA Gem Trade Laboratory under 10X magnification, and/or has been inscribed, using the techniques and equipment available to GIA Gem Trade Laboratory at the time of the examination and/or at the time of being inscribed, including fully corrected triplet loupe and binocular microscope, master color comparison diamonds, standardized viewing environment and light source, electronic carat balance, synthetic diamond screening device, high intensity short wave fluorescence imaging system, short wave ultraviolet transmission detection system, optical measuring device, micro laser inscribing device, ProportionScope®, ultraviolet lamps, millimeter gauge, and ancillary instruments as necessary. Red symbols denote internal characteristics (inclusions). Green or black symbols denote external characteristics (blemishes). Diagram is an approximate representation of the diamond, and symbols shown indicate type, position, and approximate size of clarity characteristics. All clarity characteristics may not be shown. Details of finish are not shown. The recipient of this Report may wish to consult a credentialed Jeweler or Gemologist about the importance and interrelationship of cut, color, clarity and carat weight.



IMPORTANT DOCUMENT, STORE SAFELY

This security feature is in this document, including the laboratory, security codes, identification data and reference numbers, to enhance its integrity and prevent unauthorized reproduction.

NOTICE: IMPORTANT LIMITATIONS ON BACK

Copyright © 2000 Gemological Institute of America, Inc.



# GIA GEM TRADE LABORATORY

## DIAMOND GRADING REPORT

September 04, 2003

Shape and Cutting Style ..... ROUND BRILLIANT

Measurements ..... 6.26 - 6.29 x 4.08 mm

Weight ..... 1.00 carat

### Proportions

Depth ..... 65.0 %

Table ..... 55 %

Girdle ..... MEDIUM TO THICK, FACETED

Culet ..... NONE

### Finish

Polish ..... GOOD

Symmetry ..... GOOD

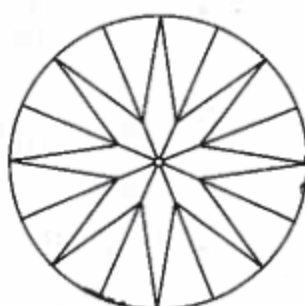
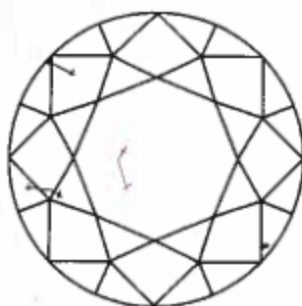
Clarity Grade ..... SI1

Color Grade ..... E

Fluorescence ..... FAINT

### Comments:

Additional twinning wisps are not shown.  
Surface graining is not shown.



### KEY TO SYMBOLS

- ~ Twinning Wisp
- ⊙ Cavity
- ^ Indented Natural

### GIA CLARITY SCALE

FLAWLESS  
INTERNALLY  
FLAWLESS

VVS<sub>1</sub>

VVS<sub>2</sub>

VS<sub>1</sub>

VS<sub>2</sub>

SI<sub>1</sub>

SI<sub>2</sub>

I<sub>1</sub>

I<sub>2</sub>

I<sub>3</sub>

NEARLY  
FLAWLESS

VERY SLIGHTLY  
IMPERFECT

SLIGHTLY  
IMPERFECT

INCLUDES  
(L/S)

### GIA COLOR SCALE

NEARLY  
FLAWLESS

NEARLY  
FLAWLESS

FLAWLESS

VERY LIGHT  
H

(L/S)

D

E

F

G

H

I

J

K

L

M

N

O

P

Q

R

S

T

U

V

W

X

Y

Z

### New York Headquarters

580 Fifth Avenue | New York, NY 10035-4754  
T: 212-221-5858 | F: 212-575-3095

### Carlsbad

5355 Armada Drive | Carlsbad, CA 92008-4899  
T: 760-603-4500 | F: 760-603-1814

203882502

This Report is not a guarantee, valuation or appraisal. This Report contains only the characteristics of the diamond described herein after it has been graded, tested, examined and analyzed by GIA Gem Trade Laboratory under 10X magnification, and/or has been inscribed using the techniques and equipment available to GIA Gem Trade Laboratory at the time of the examination and/or at the time of being inscribed, including fully corrected triplet loupe and binocular microscope, master color comparison diamonds, standardized viewing environment and light source, electronic carat balance, synthetic diamond screening device, high intensity short wave fluorescence imaging system, short wave ultraviolet transmission detection system, optical measuring device, micro laser inscribing device, ProportionScope®, ultraviolet lamps, millimeter gauge, and ancillary instruments as necessary. Red symbols denote internal characteristics (inclusions). Green or black symbols denote external characteristics (blemishes). Diagram is an approximate representation of the diamond, and symbols shown indicate type, position, and approximate size of clarity characteristics. All clarity characteristics may not be shown. Details of finish are not shown. The recipient of this Report may wish to consult a credentialed Jeweler or Gemologist about the importance and interrelationship of cut, color, clarity and carat weight.



### IMPORTANT DOCUMENT. STORE SAFELY

The security features in this document, including the hologram, security thread, ultraviolet lines and numbered serials, are subject to change without notice. Please refer to the most recent document security guidelines.

NOTICE: IMPORTANT  
LIMITATIONS ON BACK

COPYRIGHT ©2000 GEMOLOGICAL INSTITUTE OF AMERICA, INC.

EFTA00021594



# GIA GEM TRADE LABORATORY

## New York Headquarters

580 Fifth Avenue | New York, NY 10036-4794  
T: 212-221-5858 | F: 212-575-3095

## Carlsbad

5355 Armada Drive | Carlsbad, CA 92008-4699  
T: 760-603-4500 | F: 760-603-1814

## DIAMOND GRADING REPORT

June 26, 2000

Shape and Cutting Style ..... **ROUND BRILLIANT**

Measurements ..... **6.22 - 6.26 x 4.01 mm**

Weight ..... **1.00 carat**

### Proportions

Depth ..... **64.3 %**

Table ..... **62 %**

Girdle ..... **SLIGHTLY THICK TO VERY THICK,  
FACETED**

Culet ..... **NONE**

### Finish

Polish ..... **VERY GOOD**

Symmetry ..... **VERY GOOD**

Clarity Grade ..... **VS2**

Color Grade ..... **E**

Fluorescence ..... **FAINT**

### Comments:

Additional pinpoints are not shown.

### GIA CLARITY SCALE

FLAWLESS  
INTERNAL FLAWLESS

VVS<sub>1</sub>

VVS<sub>2</sub>

VS<sub>1</sub>

VS<sub>2</sub>

S<sub>1</sub>

S<sub>2</sub>

VERY VERY  
SLIGHTLY  
INCLUDED

VERY SLIGHTLY  
INCLUDED

SLIGHTLY  
INCLUDED

INCLUDED

INCLUDED

### GIA COLOR SCALE

D

E

F

G

H

I

J

K

L

M

N

O

P

COLORLESS

NEAR COLORLESS

FAINT

VERY LIGHT

LIGHT

Q

R

S

T

U

V

W

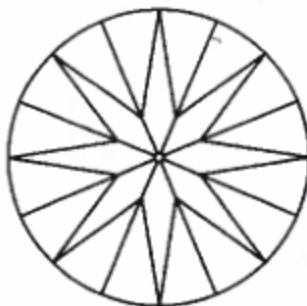
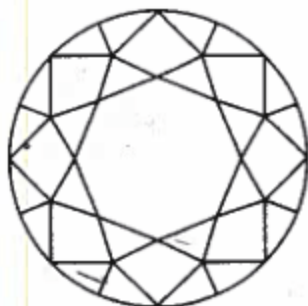
X

Y

Z

78177102

This Report is not a guarantee, valuation or appraisal. This Report contains only the characteristics of the diamond described herein after it has been graded, tested, examined and analyzed by GIA Gem Trade Laboratory under 10X magnification, and/or has been inscribed, using the techniques and equipment available to GIA Gem Trade Laboratory at the time of the examination and/or at the time of being inscribed, including fully corrected triplet loupe and binocular microscope, master color comparison diamonds, standardized viewing environment and light source, electronic carat balance, synthetic diamond screening device, high intensity short wave fluorescence imaging system, short wave ultraviolet transmission detection system, optical measuring device, micro laser inscribing device, ProportionScope®, ultraviolet lamps, millimeter gauge, and ancillary instruments as necessary. Red symbols denote internal characteristics (inclusions). Green or black symbols denote external characteristics (blemishes). Diagram is an approximate representation of the diamond, and symbols shown indicate type, position, and approximate size of clarity characteristics. All clarity characteristics may not be shown. Details of finish are not shown. The recipient of this Report may wish to consult a credentialed Jeweler or Gemologist about the importance and interrelationship of cut, color, clarity and carat weight.



### KEY TO SYMBOLS

- Crystal
- Feather
- Pinpoint



### IMPORTANT DOCUMENT, STORE SAFELY

The security features in this document, including the hologram, security number, ultraviolet lines and additional security features, are subject to change without notice and are not intended to be used as a guarantee of value.

NOTICE: IMPORTANT  
LIMITATIONS ON BACK

COPYRIGHT ©2000 GIA GEM TRADE LABORATORY



# GIA GEM TRADE LABORATORY

## DIAMOND GRADING REPORT

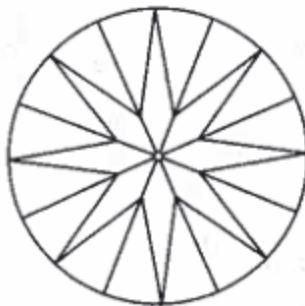
September 05, 2003

Shape and Cutting Style ..... **ROUND BRILLIANT**  
Measurements ..... **6.59 - 6.64 x 4.11 mm**  
Weight ..... **1.09 carat**

Proportions  
Depth ..... **62.1 %**  
Table ..... **56 %**  
Girdle ..... **THIN TO MEDIUM, FACETED**  
Culet ..... **NONE**  
Finish  
Polish ..... **GOOD**  
Symmetry ..... **VERY GOOD**  
Clarity Grade ..... **VS2**  
Color Grade ..... **G**  
Fluorescence ..... **NONE**

### Comments:

Additional clouds are not shown.



### KEY TO SYMBOLS

- Crystal
- Cloud

### GIA CLARITY SCALE

FLAWLESS  
INTERNALLY  
FLAWLESS

VVS<sub>1</sub>

VVS<sub>2</sub>

VS<sub>1</sub>

VS<sub>2</sub>

SI<sub>1</sub>

SI<sub>2</sub>

I<sub>1</sub>

I<sub>2</sub>

I<sub>3</sub>

### GIA COLOR SCALE

D  
E  
F  
G  
H  
I  
J  
K  
L  
M  
N  
O  
P  
Q  
R  
S  
T  
U  
V  
W  
X  
Y  
Z

### New York Headquarters

580 Fifth Avenue | New York, NY 10036-4794  
T: 212-221-5858 | F: 212-575-3095

### Carlsbad

5355 Armada Drive | Carlsbad, CA 92008-4699  
T: 760-603-4500 | F: 760-603-1814



This Report is not a guarantee, valuation or appraisal. This Report contains only the characteristics of the diamond described herein after it has been graded, tested, examined and analyzed by GIA Gem Trade Laboratory under 10X magnification, and/or has been inscribed using the techniques and equipment available to GIA Gem Trade Laboratory at the time of the examination and/or at the time of being inscribed, including fully corrected triplet loupe and binocular microscope, master color comparison diamonds, standardized viewing environment and light source, electronic carat balance, synthetic diamond screening device, high intensity short wave fluorescence imaging system, short wave ultraviolet transmission detection system, optical measuring device, micro laser inscribing device, ProportionScope™, ultraviolet lamps, millimeter gauge, and ancillary instruments as necessary. Red symbols denote internal characteristics (inclusions). Green or black symbols denote external characteristics (blemishes). Diagram is an approximate representation of the diamond, and symbols shown indicate type, position, and approximate size of clarity characteristics. All clarity characteristics may not be shown. Details of finish are not shown. The recipient of this Report may wish to consult a credentialed Jeweler or Gemologist about the importance and interrelationship of cut, color, clarity and carat weight.



### IMPORTANT DOCUMENT, STORE SAFELY

This document contains GIA's Report, including the findings, which are subject to change. This document is not to be used for any other purpose. Please do not reproduce or distribute this document without GIA's written permission.

NOTICE: IMPORTANT  
LIMITATIONS ON BACK  
COPYRIGHT ©2008 GEMOLOGICAL INSTITUTE OF AMERICA, INC.



# GIA GEM TRADE LABORATORY

New York Headquarters  
580 Fifth Avenue | New York, NY 10035-4794  
T: 212-221-5858 | F: 212-575-3095

Carlsbad  
5355 Armada Drive | Carlsbad, CA 92008-4699  
T: 760-603-4500 | F: 760-603-1814

## DIAMOND GRADING REPORT

January 15, 2001

Shape and Cutting Style ..... ROUND BRILLIANT

Measurements ..... 6.31 - 6.34 x 4.01 mm

Weight ..... 1.01 carat

### Proportions

Depth ..... 63.4 %

Table ..... 58 %

Girdle ..... MEDIUM TO THICK, FACETED

Culet ..... NONE

### Finish

Polish ..... GOOD

Symmetry ..... GOOD

Clarity Grade ..... SI1

Color Grade ..... E

Fluorescence ..... MEDIUM BLUE

### Comments:

NONE

### GIA CLARITY SCALE

FLAWLESS  
INTERNALLY  
FLAWLESS

VVS<sub>1</sub>

VVS<sub>2</sub>

VS<sub>1</sub>

VS<sub>2</sub>

SI<sub>1</sub>

SI<sub>2</sub>

I<sub>1</sub>

I<sub>2</sub>

I<sub>3</sub>

VERY SLIGHTLY  
INCLUDED

VERY SLIGHTLY  
INCLUDED

SLIGHTLY  
INCLUDED

INCLUDED

### GIA COLOR SCALE

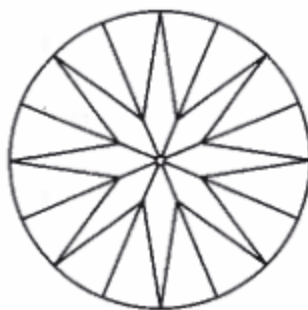
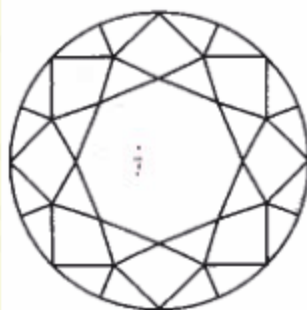
D  
E  
F  
G  
H  
I  
J  
K  
L  
M  
N  
O  
P  
Q  
R  
S  
T  
U  
V  
W  
X  
Y  
Z

NEAR COLORLESS

FAIR

POOR

VERY POOR



### KEY TO SYMBOLS

- Crystal
- Cloud
- Natural

97839702

This Report is not a guarantee, valuation or appraisal. This Report contains only the characteristics of the diamond described herein after it has been graded, tested, examined and analyzed by GIA Gem Trade Laboratory under 10X magnification, and/or has been inscribed, using the techniques and equipment available to GIA Gem Trade Laboratory at the time of the examination and/or at the time of being inscribed, including fully corrected triplet loupe and binocular microscope, master color comparison diamonds, standardized viewing environment and light source, electronic carat balance, synthetic diamond screening device, high intensity short wave fluorescence imaging system, short wave ultraviolet transmission detection system, optical measuring device, micro laser inscribing device, ProportionScope®, ultraviolet lamps, millimeter gauge, and ancillary instruments as necessary. Red symbols denote internal characteristics (inclusions). Green or black symbols denote external characteristics (blemishes). Diagram is an approximate representation of the diamond, and symbols shown indicate type, position, and approximate size of clarity characteristics. All clarity characteristics may not be shown. Details of finish are not shown. The recipient of this Report may wish to consult a credentialed Jeweler or Gemologist about the importance and interrelationship of cut, color, clarity and carat weight.



IMPORTANT DOCUMENT, STORE SAFELY

This security feature is for your protection. It is designed to prevent unauthorized access to the information contained herein. It is not intended to be used as a substitute for proper security measures.

NOTICE: IMPORTANT  
LIMITATIONS ON BACK

COPYRIGHT ©2000 GEMOLOGICAL INSTITUTE OF AMERICA, INC.

EFTA00021597



# GIA GEM TRADE LABORATORY

New York Headquarters  
580 Fifth Avenue | New York, NY 10036-4794  
T: 212-221-5858 | F: 212-575-3095

Carlsbad  
5355 Armada Drive | Carlsbad, CA 92008-4599  
T: 760-603-4500 | F: 760-603-1814

## DIAMOND GRADING REPORT

September 04, 2003

Shape and Cutting Style ..... ROUND BRILLIANT

Measurements ..... 6.30 - 6.35 x 4.03 mm

Weight ..... 1.01 carat

### Proportions

Depth ..... 63.7 %

Table ..... 57 %

Girdle ..... THIN TO SLIGHTLY THICK, FACETED

Culet ..... NONE

### Finish

Polish ..... VERY GOOD

Symmetry ..... VERY GOOD

Clarity Grade ..... VS2

Color Grade ..... G

Fluorescence ..... NONE

### Comments:

Additional clouds are not shown.



203881502

This Report is not a guarantee, valuation or appraisal. This Report contains only the characteristics of the diamond described herein after it has been graded, tested, examined and analyzed by GIA Gem Trade Laboratory under 10X magnification, and/or has been inscribed, using the techniques and equipment available to GIA Gem Trade Laboratory at the time of the examination and/or at the time of being inscribed, including fully corrected triplet loupe and binocular microscope, master color comparison diamonds, standardized viewing environment and light source, electronic carat balance, synthetic diamond screening device, high intensity short wave fluorescence imaging system, short wave ultraviolet transmission detection system, optical measuring device, micro laser inscribing device, ProportionScope®, ultraviolet lamps, millimeter gauge and ancillary instruments as necessary. Red symbols denote internal characteristics (inclusions). Green or black symbols denote external characteristics (blemishes). Diagram is an approximate representation of the diamond, and symbols shown indicate type, position, and approximate size of clarity characteristics. All clarity characteristics may not be shown. Details of finish are not shown. The recipient of this Report may wish to consult a credentialed Jeweler or Gemologist about the importance and interrelationship of cut, color, clarity and carat weight.

### GIA CLARITY SCALE

FLAWLESS  
INTERNALLY  
FLAWLESS

VVS<sub>1</sub>

VVS<sub>2</sub>

VS<sub>1</sub>

VS<sub>2</sub>

S<sub>1</sub>

S<sub>2</sub>

I<sub>1</sub>

I<sub>2</sub>

I<sub>3</sub>

VERY VERY  
SLIGHTLY  
INCLUDED

VERY SLIGHTLY  
INCLUDED

SLIGHTLY  
INCLUDED

INCLUDED

### GIA COLOR SCALE

COLORLESS

NEAR COLORLESS

FAINT

VERY LIGHT

LIGHT

D

E

F

G

H

I

J

K

L

M

N

O

P

Q

R

S

T

U

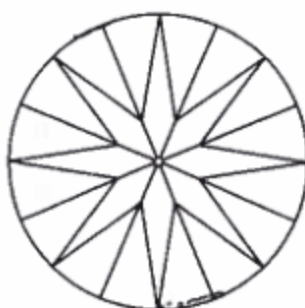
V

W

X

Y

Z



### KEY TO SYMBOLS

- Cloud
- Crystal
- △ Indented Natural



### IMPORTANT DOCUMENT, STORE SAFELY

This certificate features a 2D barcode, including the International Gemological Association (IGA) logo and a unique serial number. To verify the authenticity of this document, please contact the International Gemological Association (IGA) at 1-800-451-4643.

NOTICE: IMPORTANT  
LIMITATIONS ON BACK

COPYRIGHT ©2008 GEMOLOGICAL INSTITUTE OF AMERICA, INC.

EFTA00021598



# GIA GEM TRADE LABORATORY

## DIAMOND GRADING REPORT

September 05, 2003

Shape and Cutting Style ..... ROUND BRILLIANT

Measurements ..... 6.25 - 6.28 x 3.99 mm

Weight ..... 1.00 carat

### Proportions

Depth ..... 63.7 %

Table ..... 58 %

Girdle ..... THIN TO THICK, FACETED

Culet ..... NONE

### Finish

Polish ..... GOOD

Symmetry ..... VERY GOOD

Clarity Grade ..... VS1

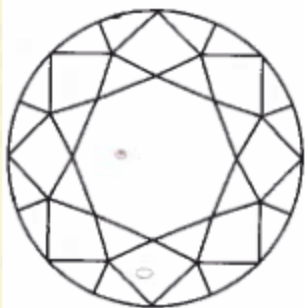
Color Grade ..... G

Fluorescence ..... NONE

### Comments:

Additional clouds are not shown.

Surface graining is not shown.



### KEY TO SYMBOLS

- Cloud
- Crystal
- △ Indented Natural
- △ Extra Facet

### GIA CLARITY SCALE

FLAWLESS  
INTERNALLY  
FLAWLESS

VVS<sub>1</sub>

VVS<sub>2</sub>

VS<sub>1</sub>

VS<sub>2</sub>

SI<sub>1</sub>

SI<sub>2</sub>

I<sub>1</sub>

I<sub>2</sub>

I<sub>3</sub>

VERY VERY  
SLIGHTLY  
INCLUDED

VERY SLIGHTLY  
INCLUDED

SLIGHTLY  
INCLUDED

INCLUDED

### GIA COLOR SCALE

COLOREST

NEAR COLOREST

FAINT

VERY LIGHT

LIGHT

D
E
F
G
H
I
J
K
L
M
N
O
P
Q
R
S
T
U
V
W
X
Y
Z



### New York Headquarters

580 Fifth Avenue | New York, NY 10035-4794

T: 212-221-5858 | F: 212-575-3095

### Carlsbad

5355 Armada Drive | Carlsbad, CA 92008-4699

T: 760-603-4500 | F: 760-603-1814

This Report is not a guarantee, valuation or appraisal. This Report contains only the characteristics of the diamond described herein after it has been graded, tested, examined and analyzed by GIA Gem Trade Laboratory under 10X magnification, and/or has been inscribed, using the techniques and equipment available to GIA Gem Trade Laboratory at the time of the examination and/or at the time of being inscribed, including fully corrected triplet loupe and binocular microscope, master color comparison diamonds, standardized viewing environment and light source, electronic carat balance, synthetic diamond screening device, high intensity short wave fluorescence imaging system, short wave ultraviolet transmission detection system, optical measuring device, micro laser inscribing device, ProportionScope®, ultraviolet lamps, millimeter gauge, and ancillary instruments as necessary. Red symbols denote internal characteristics (inclusions). Green or black symbols denote external characteristics (blemishes). Diagram is an approximate representation of the diamond, and symbols shown indicate type, position, and approximate size of clarity characteristics. All clarity characteristics may not be shown. Details of finish are not shown. The recipient of this Report may wish to consult a credentialed Jeweler or Gemologist about the importance and interrelationship of cut, color, clarity and carat weight.



### IMPORTANT DOCUMENT, STORE SAFELY

The security features in this document, including the hologram, security pattern, ultraviolet lines and electronic security, are subject to change without notice. Please consult the security features guidelines.

### NOTICE: IMPORTANT LIMITATIONS ON BACK

COPYRIGHT © 2000 GEMOLOGICAL INSTITUTE OF AMERICA, INC.

EFTA00021599



# GIA GEM TRADE LABORATORY

## DIAMOND GRADING REPORT

January 15, 2001

Shape and Cutting Style ..... **ROUND BRILLIANT**

Measurements ..... **6.31 - 6.36 x 3.92 mm**

Weight ..... **1.00 carat**

### Proportions

Depth ..... **61.9 %**

Table ..... **60 %**

Girdle ..... **THIN TO THICK, FACETED**

Culet ..... **NONE**

### Finish

Polish ..... **VERY GOOD**

Symmetry ..... **GOOD**

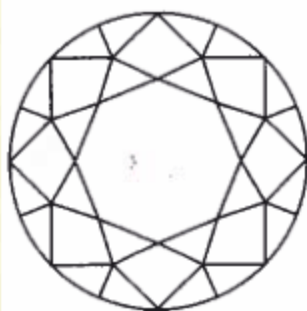
Clarity Grade ..... **VS1**

Color Grade ..... **E**

Fluorescence ..... **NONE**

### Comments:

**NONE**



### KEY TO SYMBOLS

- Cloud
- △ Indented Natural
- △ Natural

### GIA CLARITY SCALE

FLAWLESS

INTERNALLY  
FLAWLESS

VVS<sub>1</sub>

VVS<sub>2</sub>

VS<sub>1</sub>

VS<sub>2</sub>

S<sub>1</sub>

S<sub>2</sub>

I<sub>1</sub>

I<sub>2</sub>

I<sub>3</sub>

INCLUDED

INCLUDED

SLIGHTLY INCLUDED

INCLUDED

### GIA COLOR SCALE

D

E

F

G

H

I

J

K

L

M

N

O

P

Q

R

S

T

U

V

W

X

Y

Z

COLORLESS

NEAR COLORLESS

VERY SLIGHTLY  
INCLUDED

FAINT

VERY LIGHT

SLIGHT

New York Headquarters

580 Fifth Avenue | New York, NY 10036-4794

T: 212-221-5858 | F: 212-575-3095

Carlsbad

5355 Armada Drive | Carlsbad, CA 92008-4699

T: 760-603-4500 | F: 760-603-1814



97832702

This Report is not a guarantee, valuation or appraisal. This Report contains only the characteristics of the diamond described herein after it has been graded, tested, examined and analyzed by GIA Gem Trade Laboratory under 10X magnification, and/or has been inscribed, using the techniques and equipment available to GIA Gem Trade Laboratory at the time of the examination and/or at the time of being inscribed, including fully corrected triplet loupe and binocular microscope, master color comparison diamonds, standardized viewing environment and light source, electronic carat balance, synthetic diamond screening device, high intensity short wave fluorescence imaging system, short wave ultraviolet transmission detection system, optical measuring device, micro laser inscribing device, ProportionScope®, ultraviolet lamps, millimeter gauge, and ancillary instruments as necessary. Red symbols denote internal characteristics (inclusions). Green or black symbols denote external characteristics (blemishes). Diagram is an approximate representation of the diamond, and symbols shown indicate type, position, and approximate size of clarity characteristics. All clarity characteristics may not be shown. Details of finish are not shown. The recipient of this Report may wish to consult a credentialed Jeweler or Gemologist about the importance and interrelationship of cut, color, clarity and carat weight.



IMPORTANT DOCUMENT. STORE SAFELY

The accuracy of this document, including the identification of the diamond, is based on the information provided by the client. GIA Gem Trade Laboratory does not warrant the accuracy of the information provided by the client.

NOTICE: IMPORTANT LIMITATIONS ON BACK

Copyright ©2000 GEMOLOGICAL INSTITUTE OF AMERICA, INC.

EFTA00021600



# GIA GEM TRADE LABORATORY

## DIAMOND GRADING REPORT

September 05, 2003

Shape and Cutting Style ..... ROUND BRILLIANT  
Measurements ..... 6.47 - 6.53 x 3.82 mm  
Weight ..... 1.00 carat

### Proportions

Depth ..... 58.8 %  
Table ..... 60 %  
Girdle ..... MEDIUM TO SLIGHTLY THICK, FACETED  
Culet ..... NONE

### Finish

Polish ..... VERY GOOD  
Symmetry ..... GOOD

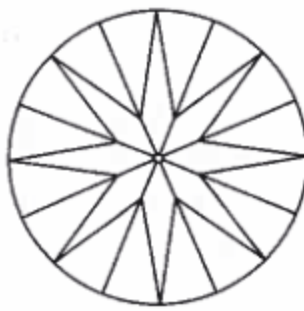
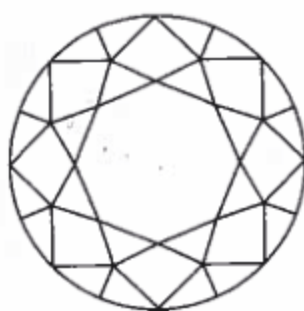
Clarity Grade ..... VS1

Color Grade ..... G

Fluorescence ..... NONE

### Comments:

Additional clouds are not shown.  
Surface graining is not shown.



### KEY TO SYMBOLS .

- Crystal
- \ Needle
- Cloud

### GIA CLARITY SCALE

FLAWLESS  
INTERNALLY  
FLAWLESS

VVS<sub>1</sub>

VVS<sub>2</sub>

VS<sub>1</sub>

VS<sub>2</sub>

S<sub>1</sub>

S<sub>2</sub>

I<sub>1</sub>

I<sub>2</sub>

I<sub>3</sub>

VERY HEAVY  
SLIGHTLY  
INCLUDED

VERY SLIGHTLY  
INCLUDED

SLIGHTLY  
INCLUDED

INCLUDED

### GIA COLOR SCALE

CONTOURED

NEAR COLORLESS

FAINT

NEAR LIGHT

LIGHT

D

E

F

G

H

I

J

K

L

M

N

O

P

Q

R

S

T

U

V

W

X

Y

Z

### New York Headquarters

580 Fifth Avenue | New York, NY 10036-4794

T: 212-221-5858 | F: 212-575-3095

### Carlsbad

5355 Armada Drive | Carlsbad, CA 92008-4599

T: 760-603-4500 | F: 760-603-1814



203995902

This Report is not a guarantee, valuation or appraisal. This Report contains only the characteristics of the diamond described herein after it has been graded, tested, examined and analyzed by GIA Gem Trade Laboratory under 10X magnification, and/or has been inscribed, using the techniques and equipment available to GIA Gem Trade Laboratory at the time of the examination and/or at the time of being inscribed, including fully corrected triplet loupe and binocular microscope, master color comparison diamonds, standardized viewing environment and light source, electronic carat balance, synthetic diamond screening device, high intensity short wave fluorescence imaging system, short wave ultraviolet transmission detection system, optical measuring device, micro laser inscribing device, ProportionScope®, ultraviolet lamps, millimeter gauge, and ancillary instruments as necessary. Red symbols denote internal characteristics (inclusions). Green or black symbols denote external characteristics (blemishes). Diagram is an approximate representation of the diamond, and symbols shown indicate type, position, and approximate size of clarity characteristics. All clarity characteristics may not be shown. Details of finish are not shown. The recipient of this Report may wish to consult a credentialed Jeweler or Gemologist about the importance and interrelationship of cut, color, clarity and carat weight.



### IMPORTANT DOCUMENT, STORE SAFELY

The authority resides in this document, including the inscription, property marking, assignment date and ownership information. It is the responsibility of the recipient to protect this document from loss, theft, damage, alteration, reproduction, or any other action that may compromise its integrity.

NOTICE: IMPORTANT LIMITATIONS ON BACK

COPYRIGHT ©2000 GEMOLOGICAL INSTITUTE OF AMERICA, INC.

EFTA00021601





# GIA GEM TRADE LABORATORY

New York Headquarters  
580 Fifth Avenue | New York, NY 10036-4794  
T: 212-221-5858 | F: 212-575-3095

Carlsbad  
5355 Armada Drive | Carlsbad, CA 92008-4699  
T: 760-603-4500 | F: 760-603-1814

## DIAMOND GRADING REPORT

September 10, 2002

Shape and Cutting Style ..... **ROUND BRILLIANT**

Measurements ..... **6.46 - 6.50 x 3.88 mm**

Weight ..... **1.01 carat**

### Proportions

Depth ..... **59.9 %**

Table ..... **62 %**

Girdle ..... **THIN TO THICK, FACETED**

Culet ..... **NONE**

### Finish

Polish ..... **GOOD**

Symmetry ..... **GOOD**

Clarity Grade ..... **VS2**

Color Grade ..... **F**

Fluorescence ..... **NONE**

### Comments:

**NONE**

### GIA CLARITY SCALE

FLAWLESS

INTERIALLY  
FLAWLESS

VVS<sub>1</sub>

VVS<sub>2</sub>

VS<sub>1</sub>

VS<sub>2</sub>

SI<sub>1</sub>

SI<sub>2</sub>

I<sub>1</sub>

I<sub>2</sub>

I<sub>3</sub>

VERY VERY  
SLIGHTLY  
INCLUDED

VERY SLIGHTLY  
INCLUDED

SLIGHTLY  
INCLUDED

INCLUDED

### GIA COLOR SCALE

D

E

F

G

H

I

J

K

L

M

N

O

P

Q

R

S

T

U

V

W

X

Y

Z

COLORLESS

NEAR COLORLESS

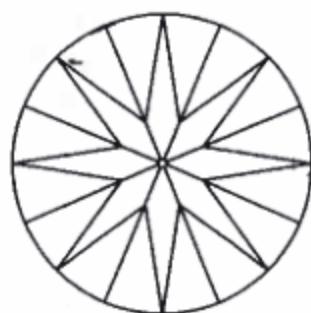
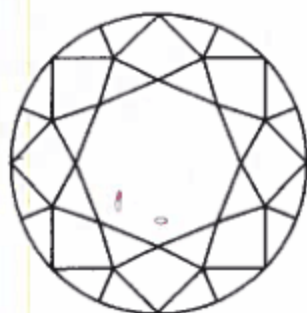
FANT

VERY LIGHT

LIGHT

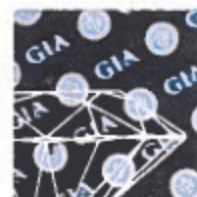
158263502

This Report is not a guarantee, valuation or appraisal. This Report contains only the characteristics of the diamond described herein after it has been graded, tested, examined and analyzed by GIA Gem Trade Laboratory under 10X magnification, and/or has been inscribed, using the techniques and equipment available to GIA Gem Trade Laboratory at the time of the examination and/or at the time of being inscribed, including fully corrected triplet loupe and binocular microscope, master color comparison diamonds, standardized viewing environment and light source, electronic carat balance, synthetic diamond screening device, high intensity short wave fluorescence imaging system, short wave ultraviolet transmission detection system, optical measuring device, micro laser inscribing device, ProportionScope®, ultraviolet lamps, millimeter gauge, and ancillary instruments as necessary. Red symbols denote internal characteristics (Inclusions). Green or black symbols denote external characteristics (blemishes). Diagram is an approximate representation of the diamond, and symbols shown indicate type, position, and approximate size of clarity characteristics. All clarity characteristics may not be shown. Details of finish are not shown. The recipient of this Report may wish to consult a credentialed Jeweler or Gemologist about the importance and interrelationship of cut, color, clarity and carat weight.



### KEY TO SYMBOLS

- Crystal
- ◊ Cloud
- ~ Feather
- ^ Indented Natural



IMPORTANT DOCUMENT, STORE SAFELY

This report is for the use of the recipient only. It is not to be used for any other purpose. It is not to be reproduced or distributed without the written consent of GIA.

NOTICE: IMPORTANT  
LIMITATIONS ON BACK

COPYRIGHT ©2000 GEMOLOGICAL INSTITUTE OF AMERICA, INC.



# GIA GEM TRADE LABORATORY

## DIAMOND GRADING REPORT

January 29, 2004

Shape and Cutting Style ..... **ROUND BRILLIANT**

Measurements ..... **8.68 - 8.73 x 5.17 mm**

Weight ..... **2.36 carat**

### Proportions

Depth ..... **59.4 %**

Table ..... **59 %**

Girdle ..... **THIN TO MEDIUM, FACETED**

Culet ..... **NONE**

### Finish

Polish ..... **VERY GOOD**

Symmetry ..... **EXCELLENT**

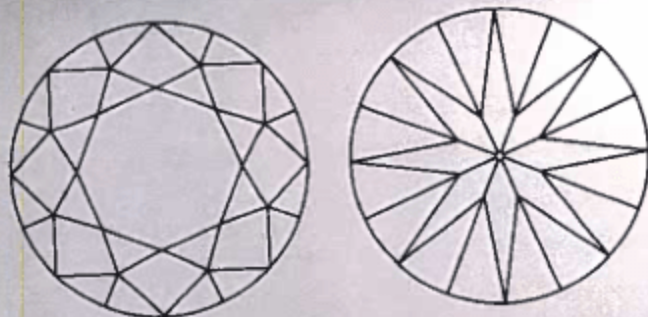
Clarity Grade ..... **INTERNALLY FLAWLESS**

Color Grade ..... **D**

Fluorescence ..... **NONE**

### Comments:

Minor details of polish are not shown.



KEY TO SYMBOLS

### GIA CLARITY SCALE

FLAWLESS

INTERNALLY  
FLAWLESS

VVS<sub>1</sub>

VVS<sub>2</sub>

VS<sub>1</sub>

VS<sub>2</sub>

SI<sub>1</sub>

SI<sub>2</sub>

I<sub>1</sub>

I<sub>2</sub>

I<sub>3</sub>

VERY VERY  
SLIGHTLY  
INCLUDED

VERY SLIGHTLY  
INCLUDED

SLIGHTLY  
INCLUDED

INCLUDED

### GIA COLOR SCALE

D

E

F

G

H

I

J

K

L

M

N

O

P

Q

R

S

T

U

V

W

X

Y

Z

COLORED

VERY COLORED

FANT

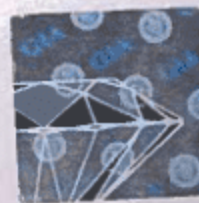
VERY LIGHT

LIGHT



148310001

This Report is not a guarantee, valuation or appraisal. This Report contains only the characteristics of the diamond described herein after it has been graded, tested, examined and analyzed by GIA Gem Trade Laboratory under 10X magnification, and/or has been inscribed, using the techniques and equipment available to GIA Gem Trade Laboratory at the time of the examination and/or at the time of being inscribed, including fully corrected triplet loupe and binocular microscope, master color comparison diamonds, standardized viewing environment and light source, electronic carat balance, synthetic diamond screening device, high intensity short wave fluorescence imaging system, optical measuring device, micro laser inscribing device, ProportionScope®, ultraviolet lamps, millimeter gauge, and ancillary instruments as necessary. Red symbols denote internal characteristics (inclusions). Green or black symbols denote external characteristics (blemishes). Diagram is an approximate representation of the diamond, and symbols shown indicate type, position, and approximate size of clarity characteristics. All clarity characteristics may not be shown. Details of finish are not shown. The recipient of this Report may wish to consult a credentialed Jeweler or Gemologist about the importance and interrelationship of cut, color, clarity and carat weight.



IMPORTANT DOCUMENT. STORE SAFELY

The security features in this document, including the security watermark, are designed to protect the integrity of the information contained herein.

NOTICE IMPORTANT  
LIMITATIONS ON BACK

COPYRIGHT © 2000 GEMOLOGICAL INSTITUTE OF AMERICA, INC.



# GIA GEM TRADE LABORATORY

## DIAMOND GRADING REPORT

September 05, 2003

Shape and Cutting Style ..... ROUND BRILLIANT

Measurements ..... 6.27 - 6.36 x 4.04 mm

Weight ..... 1.01 carat

### Proportions

Depth ..... 64.0 %

Table ..... 56 %

Girdle ..... MEDIUM TO SLIGHTLY THICK, FACETED

Culet ..... NONE

### Finish

Polish ..... VERY GOOD

Symmetry ..... GOOD

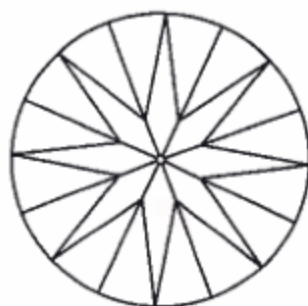
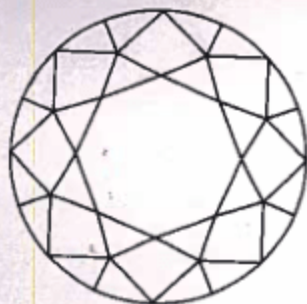
Clarity Grade ..... VS1

Color Grade ..... D

Fluorescence ..... NONE

### Comments:

Clouds are not shown.



### KEY TO SYMBOLS

- Crystal
- △ Needle
- ▲ Indented Natural
- △ Natural

### GIA CLARITY SCALE

FLAWLESS  
INTERIALLY  
FLAWLESS

VVS<sub>1</sub>

VVS<sub>2</sub>

VS<sub>1</sub>

VS<sub>2</sub>

SI<sub>1</sub>

SI<sub>2</sub>

I<sub>1</sub>

I<sub>2</sub>

I<sub>3</sub>

### GIA COLOR SCALE

D

E

F

G

H

I

J

K

L

M

N

O

P

Q

R

S

T

U

V

W

X

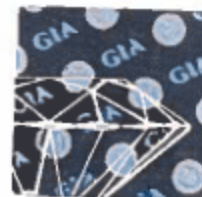
Y

Z



203996702

This Report is not a guarantee, valuation or appraisal. This Report contains only the characteristics of the diamond described herein after it has been graded, tested, examined and analyzed by GIA Gem Trade Laboratory under 10X magnification, and/or has been inscribed, using the techniques and equipment available to GIA Gem Trade Laboratory at the time of the examination and/or at the time of being inscribed, including fully corrected triplet loupe and binocular microscope, master color comparison diamonds, standardized viewing environment and light source, electronic carat balance, synthetic diamond screening device, high intensity short wave fluorescence imaging system, short wave ultraviolet transmission detection system, optical measuring device, micro laser inscribing device, ProportionScope®, ultraviolet lamps, millimeter gauge, and ancillary instruments as necessary. Red symbols denote internal characteristics (inclusions). Green or black symbols denote external characteristics (blemishes). Diagram is an approximate representation of the diamond, and symbols shown indicate type, position, and approximate size of clarity characteristics. All clarity characteristics may not be shown. Details of finish are not shown. The recipient of this Report may wish to consult a credentialed Jeweler or Gemologist about the importance and interrelationship of cut, color, clarity and carat weight.



### IMPORTANT DOCUMENT, STORE SAFELY

This security features to the document, including the hologram, security seal, ultraviolet lamp, and other security features, are available to the recipient of this document.

NOTICE: IMPORTANT  
LIMITATIONS ON BACK

COPYRIGHT ©2000 GEMOLOGICAL INSTITUTE OF AMERICA, INC.

EFTA00021605



# GIA GEM TRADE LABORATORY

New York Headquarters  
580 Fifth Avenue | New York, NY 10036-4794  
T: 212-221-5858 | F: 212-575-3085

Carlsbad  
5355 Armada Drive | Carlsbad, CA 92008-4699  
T: 760-603-4500 | F: 760-603-1814

## DIAMOND GRADING REPORT

March 26, 2001

Shape and Cutting Style ..... **ROUND BRILLIANT**  
Measurements ..... **6.37 - 6.42 x 4.05 mm**  
Weight ..... **1.01 carat**

Proportions  
Depth ..... **63.3 %**  
Table ..... **56 %**  
Girdle ..... **THIN TO THICK, FACETED**  
Culet ..... **NONE**

Finish  
Polish ..... **VERY GOOD**  
Symmetry ..... **GOOD**

Clarity Grade ..... **VS2**  
Color Grade ..... **F**  
Fluorescence ..... **NONE**

Comments:  
**NONE**

### GIA CLARITY SCALE

FLAWLESS  
INTERNALLY  
FLAWLESS

VVS<sub>1</sub>

VVS<sub>2</sub>

VS<sub>1</sub>

VS<sub>2</sub>

S<sub>1</sub>

S<sub>2</sub>

I<sub>1</sub>

I<sub>2</sub>

I<sub>3</sub>

VERY VERY  
SLIGHTLY  
INCLUDES

VERY SLIGHTLY  
INCLUDES

SLIGHTLY  
INCLUDES

INCLUDES

### GIA COLOR SCALE

D

E

F

G

H

I

J

K

L

M

N

O

P

Q

R

S

T

U

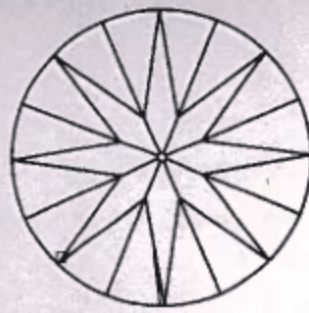
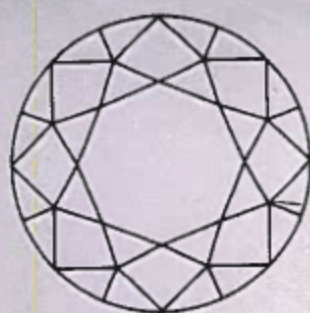
V

W

X

Y

Z



### KEY TO SYMBOLS

- ~ Feather
- ^ Natural
- ^ Extra Facet

This Report is not a guarantee, valuation or appraisal. This Report contains only the characteristics of the diamond described herein after it has been graded, tested, examined and analyzed by GIA Gem Trade Laboratory under 10X magnification, and/or has been inscribed, using the techniques and equipment available to GIA Gem Trade Laboratory at the time of the examination and/or at the time of being inscribed, including fully corrected triplet loupe and binocular microscope, master color comparison diamonds, standardized viewing environment and light source, electronic carat balance, synthetic diamond screening device, high intensity short wave fluorescence imaging system, short wave ultraviolet transmission detection system, optical measuring device, micro laser inscribing device, ProportionScope®, ultraviolet lamps, millimeter gauge, and ancillary instruments as necessary. Red symbols denote internal characteristics (inclusions). Green or black symbols denote external characteristics (blemishes). Diagram is an approximate representation of the diamond, and symbols shown indicate type, position, and approximate size of clarity characteristics. All clarity characteristics may not be shown. Details of finish are not shown. The recipient of this Report may wish to consult a credentialed Jeweler or Gemologist about the importance and interrelationship of cut, color, clarity and carat weight.



### IMPORTANT DOCUMENT, STORE SAFELY

The jewelry remains its sole document. Including the hologram, security screen, diamond base and protective container, to maintain its value and insure against document security industry practices.

NOTICE, IMPORTANT LIMITATIONS ON BACK

COPYRIGHT ©2000 GEMOLOGICAL INSTITUTE OF AMERICA, INC.

GIA REPORT 11383481

EFTA00021606



# GIA GEM TRADE LABORATORY

New York Headquarters  
580 Fifth Avenue | New York, NY 10036-4794  
T: 212-221-5858 | F: 212-575-3095

Carlsbad  
5355 Armada Drive | Carlsbad, CA 92008-4899  
T: 760-603-4500 | F: 760-603-1814

## DIAMOND GRADING REPORT

September 08, 2003

Shape and Cutting Style ..... OVAL BRILLIANT  
Measurements ..... 7.36 x 5.68 x 3.74 mm  
Weight ..... 1.04 carat

### Proportions

Depth ..... 65.8 %  
Table ..... 57 %  
Girdle ..... SLIGHTLY THICK TO VERY THICK,

FACETED

Culet ..... NONE

### Finish

Polish ..... GOOD

Symmetry ..... GOOD

Clarity Grade ..... INTERNALLY FLAWLESS

Color Grade ..... D

Fluorescence ..... NONE

### Comments:

Minor details of polish are not shown.

### GIA CLARITY SCALE

FLAWLESS  
INTERNALLY  
FLAWLESS

VVS<sub>1</sub>

VVS<sub>2</sub>

VS<sub>1</sub>

VS<sub>2</sub>

SI<sub>1</sub>

SI<sub>2</sub>

I<sub>1</sub>

I<sub>2</sub>

I<sub>3</sub>

### GIA COLOR SCALE

D

E

F

G

H

I

J

K

L

M

N

O

P

Q

R

S

T

U

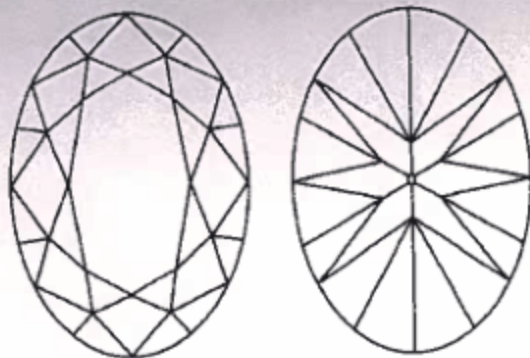
V

W

X

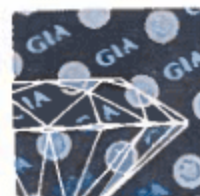
Y

Z



KEY TO SYMBOLS

This Report is not a guarantee, valuation or appraisal. This Report contains only the characteristics of the diamond described herein after it has been graded, tested, examined and analyzed by GIA Gem Trade Laboratory under 10X magnification, and/or has been inscribed, using the techniques and equipment available to GIA Gem Trade Laboratory at the time of the examination and/or at the time of being inscribed, including fully corrected triplet loupe and binocular microscope, master color comparison diamonds, standardized viewing environment and light source, electronic carat balance, synthetic diamond screening device, high intensity short wave fluorescence imaging system, short wave ultraviolet transmission detection system, optical measuring device, micro laser inscribing device, ProportionScope®, ultraviolet lamps, millimeter gauge, and ancillary instruments as necessary. Red symbols denote internal characteristics (inclusions). Green or black symbols denote external characteristics (blemishes). Diagram is an approximate representation of the diamond, and symbols shown indicate type, position, and approximate size of clarity characteristics. All clarity characteristics may not be shown. Details of finish are not shown. The recipient of this Report may wish to consult a credentialed Jeweler or Gemologist about the importance and interrelationship of cut, color, clarity and carat weight.



IMPORTANT DOCUMENT, STORE SAFELY

This report is valid only if the diamond is accompanied by the original GIA report and the diamond is not altered or damaged. The report is not valid if the diamond is altered or damaged. The report is not valid if the diamond is altered or damaged.

NOTICE: IMPORTANT  
LIMITATIONS ON BACK

COPYRIGHT ©2000 GEMOLOGICAL INSTITUTE OF AMERICA, INC.



# GIA GEM TRADE LABORATORY

A Division of GIA Enterprises, Inc.  
A Wholly Owned Subsidiary of the Nonprofit Gemological Institute of America, Inc.

580 Fifth Avenue  
New York, New York 10036-4794  
(212) 221-5858  
FAX: (212) 575-3095

5355 Armada Drive  
Carlsbad, California 92008-4699  
(760) 603-4500  
FAX: (760) 603-1814

10429438

AUG 21 1998

## DIAMOND GRADING REPORT

THE FOLLOWING WERE, AT THE TIME OF THE EXAMINATION, THE CHARACTERISTICS OF THE DIAMOND DESCRIBED HEREIN BASED UPON 10X MAGNIFICATION (FULLY CORRECTED TRIPLET LOUPE AND BINOCULAR MICROSCOPE), DIAMONDITE AND MASTER COLOR COMPARISON DIAMONDS, ULTRAVIOLET LAMPS, MILLIMETER GAUGE, CARAT BALANCE, PROPORTIONSCOPE, AND ANCILLARY INSTRUMENTS AS NECESSARY.

RED SYMBOLS DENOTE INTERNAL CHARACTERISTICS (INCLUSIONS)  
GREEN SYMBOLS DENOTE EXTERNAL CHARACTERISTICS (BLEMISHES)  
SYMBOLS INDICATE TYPE, POSITION AND APPROXIMATE SIZE OF CHARACTERISTICS. DETAILS OF FINISH ARE NOT SHOWN. DIAGRAM MAY BE APPROXIMATE.

**KEY TO SYMBOLS**  
NEEDLE  
PINPOINT

**SHAPE AND CUTTING STYLE** ... OVAL BRILLIANT  
Measurements ... 7.87 X 5.38 X 3.48 MM.  
Weight ... 1.00 CARATS

**PROPORTIONS** ...  
Depth ... 64.7 %  
Table ... 55 %  
Girdle ... MEDIUM TO VERY THICK, FACETED  
Culet ... NONE  
**FINISH**  
Polish ... VERY GOOD  
Symmetry ... GOOD

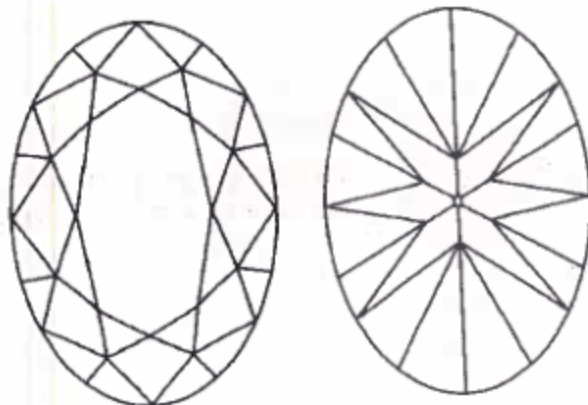
**CLARITY GRADE** ... VVS2

**COLOR GRADE** ... D

Fluorescence ... NONE

### COMMENTS:

SURFACE GRAINING IS NOT SHOWN.

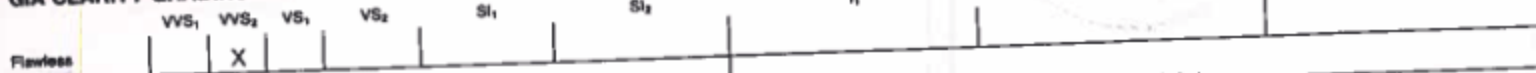


ORIGINAL

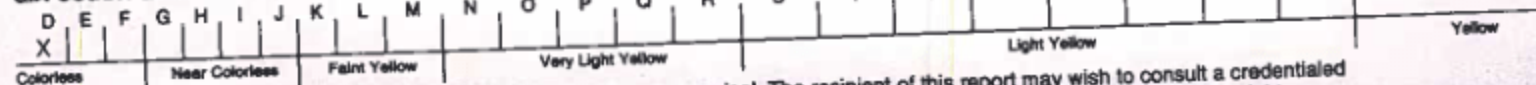
GIA GEM TRADE LABORATORY

*GIA Gem Trade Laboratory*

### GIA CLARITY GRADING SCALE



### GIA COLOR GRADING SCALE



This report is not a guarantee, valuation or appraisal. The recipient of this report may wish to consult a credentialed Jeweler or Gemologist about the importance and interrelationship of cut, color, clarity and carat weight.

**NOTICE: IMPORTANT LIMITATIONS ON REVERSE**



# GIA GEM TRADE LABORATORY

## DIAMOND GRADING REPORT

September 08, 2003

Shape and Cutting Style ..... OVAL BRILLIANT  
Measurements ..... 8.50 x 5.49 x 3.51 mm  
Weight ..... 1.09 carat

### Proportions

Depth ..... 63.9 %  
Table ..... 59 %  
Girdle ..... MEDIUM TO THICK, FACETED  
Culet ..... NONE

### Finish

Polish ..... GOOD  
Symmetry ..... VERY GOOD

Clarity Grade ..... VS1

Color Grade ..... D

Fluorescence ..... MEDIUM BLUE

### Comments:

NONE

### GIA CLARITY SCALE

FLAWLESS  
INTERIALLY  
FLAWLESS

VVS<sub>1</sub>  
VVS<sub>2</sub>

VS<sub>1</sub>  
VS<sub>2</sub>

SI<sub>1</sub>  
SI<sub>2</sub>

I<sub>1</sub>

I<sub>2</sub>

I<sub>3</sub>

### GIA COLOR SCALE

D

E

F

G

H

I

J

K

L

M

N

O

P

Q

R

S

T

U

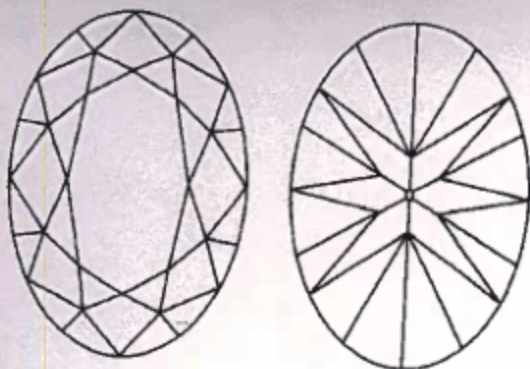
V

W

X

Y

Z



### KEY TO SYMBOLS

- Needle
- Natural
- Indented Natural

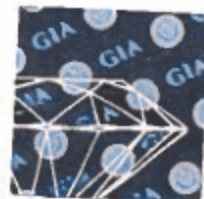
New York Headquarters  
580 Fifth Avenue | New York, NY 10036-4794  
T: 212-221-5858 | F: 212-575-3095

Carlsbad  
5355 Armada Drive | Carlsbad, CA 92008-4639  
T: 760-603-4500 | F: 760-603-1814



204065202

This Report is not a guarantee, valuation or appraisal. This Report contains only the characteristics of the diamond described herein after it has been graded, tested, examined and analyzed by GIA Gem Trade Laboratory under 10X magnification, and/or has been inscribed, using the techniques and equipment available to GIA Gem Trade Laboratory at the time of the examination and/or at the time of being inscribed, including luffy corrected triplet loupe and binocular microscope, master color comparison diamonds, standardized viewing environment and light source, electronic carat balance, synthetic diamond screening device, high intensity short wave fluorescence imaging system, short wave ultraviolet transmission detection system, optical measuring device, micro laser inscribing device, ProportionScope®, ultraviolet lamps, millimeter gauge, and ancillary instruments as necessary. Red symbols denote internal characteristics (inclusions). Green or black symbols denote external characteristics (blemishes). Diagram is an approximate representation of the diamond, and symbols shown indicate type, position, and approximate size of clarity characteristics. All clarity characteristics may not be shown. Details of finish are not shown. The recipient of this Report may wish to consult a credentialed Jeweler or Gemologist about the importance and interrelationship of cut, color, clarity and carat weight.



IMPORTANT DOCUMENT, STORE SAFELY

The security features in this document, including the hologram, security device, integrated chip, and other security features, are designed to protect the integrity of the information contained herein.

NOTICE: IMPORTANT  
LIMITATIONS ON BACK

COPYRIGHT ©2000 GEMOLOGICAL INSTITUTE OF AMERICA, INC.

EFTA00021609



# GIA GEM TRADE LABORATORY

New York Headquarters  
580 Fifth Avenue | New York, NY 10036-4794  
T: 212-221-5858 | F: 212-575-3095

Carlsbad  
5355 Armada Drive | Carlsbad, CA 92008-4699  
T: 760-603-4500 | F: 760-603-1814

## DIAMOND GRADING REPORT

January 15, 2001

Shape and Cutting Style ..... OVAL BRILLIANT

Measurements ..... 8.71 x 6.30 x 3.02 mm

Weight ..... 1.09 carat

### Proportions

Depth ..... 47.9 %

Table ..... 57 %

Girdle ..... THIN TO SLIGHTLY THICK, FACETED

Culet ..... NONE

### Finish

Polish ..... GOOD

Symmetry ..... GOOD

Clarity Grade ..... VS2

Color Grade ..... D

Fluorescence ..... FAINT

### Comments:

Surface graining is not shown.

### GIA CLARITY SCALE

FLAWLESS

INTERIALLY  
FLAWLESS

VVS<sub>1</sub>

VVS<sub>2</sub>

VS<sub>1</sub>

VS<sub>2</sub>

SI<sub>1</sub>

SI<sub>2</sub>

I<sub>1</sub>

I<sub>2</sub>

I<sub>3</sub>

### GIA COLOR SCALE

D

E

F

G

H

I

J

K

L

M

N

O

P

Q

R

S

T

U

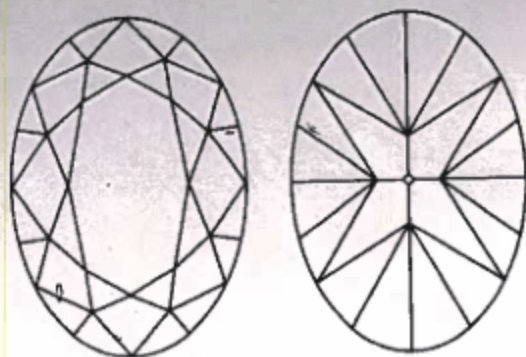
V

W

X

Y

Z



### KEY TO SYMBOLS

- Crystal
- ~ Feather
- △ Indented Natural

97852302

This Report is not a guarantee, valuation or appraisal. This Report contains only the characteristics of the diamond described herein after it has been graded, tested, examined and analyzed by GIA Gem Trade Laboratory under 10X magnification, and/or has been inscribed, using the techniques and equipment available to GIA Gem Trade Laboratory at the time of the examination and/or at the time of being inscribed, including fully corrected triplet loupe and binocular microscope, master color comparison diamonds, standardized viewing environment and light source, electronic carat balance, synthetic diamond screening device, high intensity short wave fluorescence imaging system, short wave ultraviolet transmission detection system, optical measuring device, micro laser inscribing device, ProportionScope®, ultraviolet lamps, millimeter gauge, and ancillary instruments as necessary. Red symbols denote internal characteristics (inclusions). Green or black symbols denote external characteristics (blemishes). Diagram is an approximate representation of the diamond, and symbols shown indicate type, position, and approximate size of clarity characteristics. All clarity characteristics may not be shown. Details of finish are not shown. The recipient of this Report may wish to consult a credentialed Jeweler or Gemologist about the importance and interrelationship of cut, color, clarity and carat weight.



### IMPORTANT DOCUMENT, STORE SAFELY

This security feature is in this document, including the laboratory, research, and technical data, and should be kept in a safe place. Do not allow anyone to remove this document.

NOTICE: IMPORTANT LIMITATIONS ON BACK

COPYRIGHT ©2000 GEMOLOGICAL INSTITUTE OF AMERICA, INC.



# GIA GEM TRADE LABORATORY

New York Headquarters  
580 Fifth Avenue | New York, NY 10036-4794  
T: 212-221-5858 | F: 212-575-3895

Carlsbad  
5355 Aramida Drive | Carlsbad, CA 92008-4899  
T: 760-603-4500 | F: 760-603-1814

## DIAMOND GRADING REPORT

September 10, 2002

Shape and Cutting Style ..... OVAL BRILLIANT

Measurements ..... 8.26 x 5.99 x 3.10 mm

Weight ..... 1.04 carat

### Proportions

Depth ..... 51.8 %

Table ..... 54 %

Girdle ..... MEDIUM TO SLIGHTLY THICK, FACETED

Culet ..... NONE

### Finish

Polish ..... VERY GOOD

Symmetry ..... GOOD

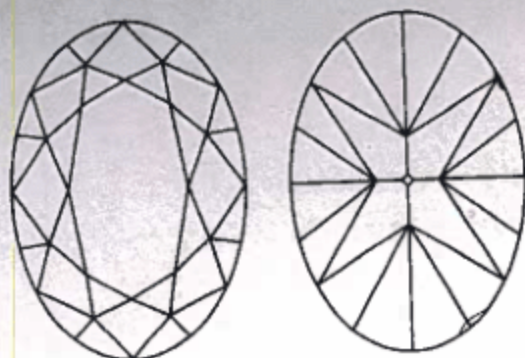
Clarity Grade ..... VS2

Color Grade ..... E

Fluorescence ..... MEDIUM BLUE

### Comments:

NONE



### KEY TO SYMBOLS

- △ Indented Natural
- Cloud
- Pinpoint
- △ Natural

### GIA CLARITY SCALE

FLAWLESS

INTERIALLY  
FLAWLESS

VVS<sub>1</sub>

VVS<sub>2</sub>

VS<sub>1</sub>

VS<sub>2</sub>

SI<sub>1</sub>

SI<sub>2</sub>

I<sub>1</sub>

I<sub>2</sub>

I<sub>3</sub>

VERY VERY  
SLIGHTLY  
INCLUDED

VERY SLIGHTLY  
INCLUDED

SLIGHTLY INCLUDED

INCLUDED

### GIA COLOR SCALE

D

E

F

G

H

I

J

K

L

M

N

O

P

Q

R

S

T

U

V

W

X

Y

Z

COLORED

NEAR COLORLESS

FAINT

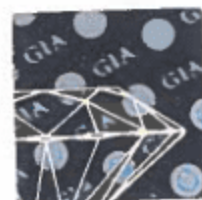
VERY LIGHT

LIGHT



158268202

This Report is not a guarantee, valuation or appraisal. This Report contains only the characteristics of the diamond described herein after it has been graded, tested, examined and analyzed by GIA Gem Trade Laboratory under 10X magnification, and/or has been inscribed, using the techniques and equipment available to GIA Gem Trade Laboratory at the time of the examination and/or at the time of being inscribed, including fully corrected triplet loupe and binocular microscope, master color comparison diamonds, standardized viewing environment and light source, electronic carat balance, synthetic diamond screening device, high intensity short wave fluorescence imaging system, short wave ultraviolet transmission detection system, optical measuring device, micro laser inscribing device, ProportionScope®, ultraviolet lamps, millimeter gauge, and ancillary instruments as necessary. Red symbols denote internal characteristics (inclusions). Green or black symbols denote external characteristics (blemishes). Diagram is an approximate representation of the diamond, and symbols shown indicate type, position, and approximate size of clarity characteristics. All clarity characteristics may not be shown. Details of finish are not shown. The recipient of this Report may wish to consult a credentialed Jeweler or Gemologist about the importance and interrelationship of cut, color, clarity and carat weight.



IMPORTANT DOCUMENT, STORE SAFELY

The grading system is based on the International Gemological Association's (IGA) standards and procedures, which are subject to change without notice. GIA reserves the right to modify its grading system and procedures without notice.

NOTICE: IMPORTANT  
LIMITATIONS ON BACK

COPYRIGHT ©2000 GEMOLOGICAL INSTITUTE OF AMERICA, INC.



# GIA GEM TRADE LABORATORY

## DIAMOND GRADING REPORT

September 08, 2003

Shape and Cutting Style ..... OVAL BRILLIANT

Measurements ..... 7.47 x 5.65 x 3.77 mm

Weight ..... 1.03 carat

### Proportions

Depth ..... 66.7 %

Table ..... 53 %

Girdle ..... THICK TO VERY THICK, FACETED

Culet ..... NONE

### Finish

Polish ..... GOOD

Symmetry ..... GOOD

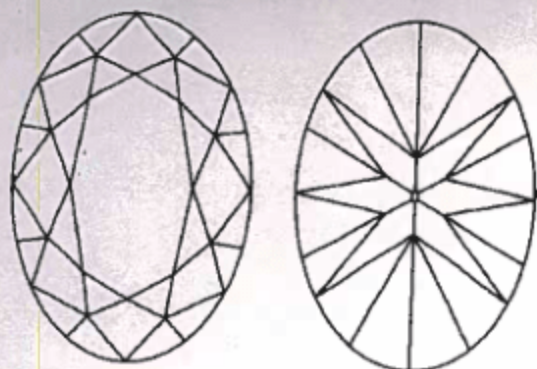
Clarity Grade ..... VS1

Color Grade ..... E

Fluorescence ..... MEDIUM BLUE

### Comments:

NONE



### KEY TO SYMBOLS

- Crystal
- Needle
- Pinpoint
- Natural

### GIA CLARITY SCALE

FLAWLESS  
INTERIALLY  
FLAWLESS

VVS<sub>1</sub>

VVS<sub>2</sub>

VS<sub>1</sub>

VS<sub>2</sub>

SI<sub>1</sub>

SI<sub>2</sub>

I<sub>1</sub>

I<sub>2</sub>

I<sub>3</sub>

### GIA COLOR SCALE

D

E

F

G

H

I

J

K

L

M

N

O

P

Q

R

S

T

U

V

W

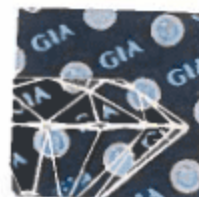
X

Y

Z

204125302

This Report is not a guarantee, valuation or appraisal. This Report contains only the characteristics of the diamond described herein after it has been graded, tested, examined and analyzed by GIA Gem Trade Laboratory under 10X magnification, and/or has been inscribed, using the techniques and equipment available to GIA Gem Trade Laboratory at the time of the examination and/or at the time of being inscribed, including fully corrected triplet loupe and binocular microscope, master color comparison diamonds, standardized viewing environment and light source, electronic carat balance, synthetic diamond screening device, high intensity short wave fluorescence imaging system, short wave ultraviolet transmission detection system, optical measuring device, micro laser inscribing device, ProportionScope®, ultraviolet lamps, millimeter gauge, and ancillary instruments as necessary. Red symbols denote internal characteristics (inclusions). Green or black symbols denote external characteristics (blemishes). Diagram is an approximate representation of the diamond, and symbols shown indicate type, position, and approximate size of clarity characteristics. All clarity characteristics may not be shown. Details of finish are not shown. The recipient of this Report may wish to consult a credentialed Jeweler or Gemologist about the importance and interrelationship of cut, color, clarity and carat weight.



### IMPORTANT DOCUMENT, STORE SAFELY

This certificate contains the GIA description, including the diamond's weight, color, clarity, cut and fluorescence, as well as the GIA Gem Trade Laboratory's grading and certification procedures.

NOTICE: IMPORTANT  
LIMITATIONS ON BACK

COPYRIGHT © 2000 GEMOLOGICAL INSTITUTE OF AMERICA, INC.

EFTA00021612



# GIA GEM TRADE LABORATORY

New York Headquarters  
580 Fifth Avenue | New York, NY 10036-4794  
T: 212-221-5858 | F: 212-575-3095

Carlsbad  
5355 Armada Drive | Carlsbad, CA 92008-4889  
T: 760-603-4500 | F: 760-603-1814

## DIAMOND GRADING REPORT

June 19, 2000

Shape and Cutting Style ..... OVAL BRILLIANT

Measurements ..... 7.42 x 5.72 x 3.67 mm

Weight ..... 1.03 carat

### Proportions

Depth ..... 64.2 %

Table ..... 58 %

Girdle ..... VERY THIN TO THICK, FACETED

Culet ..... NONE

### Finish

Polish ..... VERY GOOD

Symmetry ..... GOOD

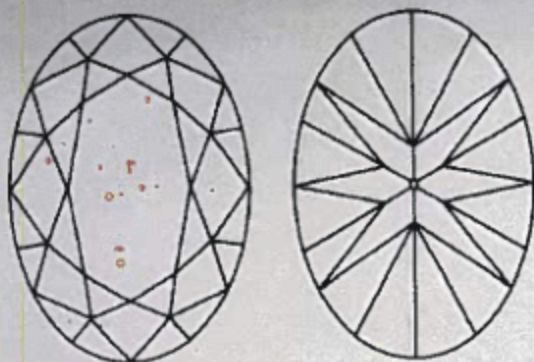
Clarity Grade ..... SI1

Color Grade ..... E

Fluorescence ..... NONE

### Comments:

Clouds are not shown.



### KEY TO SYMBOLS

- Crystal
- Needle

### GIA CLARITY SCALE

FLAWLESS  
INTERNALLY  
FLAWLESS

VVS<sub>1</sub>

VVS<sub>2</sub>

VS<sub>1</sub>

VS<sub>2</sub>

SI<sub>1</sub>

SI<sub>2</sub>

I<sub>1</sub>

I<sub>2</sub>

I<sub>3</sub>

VERY VERY  
SLIGHTLY  
INCLUDED

VERY SLIGHTLY  
INCLUDED

SLIGHTLY INCLUDED

INCLUDED

### GIA COLOR SCALE

D

E

F

G

H

I

J

K

L

M

N

O

P

Q

R

S

T

U

V

W

X

Y

Z

COLORLESS  
FEAR COLORLESS  
FLAWT

VERY LIGHT

LIGHT

This Report is not a guarantee, valuation or appraisal. This Report contains only the characteristics of the diamond described herein after it has been graded, tested, examined and analyzed by GIA Gem Trade Laboratory under 10X magnification, and/or has been inscribed, using the techniques and equipment available to GIA Gem Trade Laboratory at the time of the examination and/or at the time of being inscribed, including fully corrected triplet loupe and binocular microscope, master color comparison diamonds, standardized viewing environment and light source, electronic carat balance, synthetic diamond screening device, high intensity short wave fluorescence imaging system, short wave ultraviolet transmission detection system, optical measuring device, micro laser inscribing device, ProportionScope®, ultraviolet lamps, millimeter gauge, and ancillary instruments as necessary. Red symbols denote internal characteristics (inclusions). Green or black symbols denote external characteristics (blemishes). Diagram is an approximate representation of the diamond, and symbols shown indicate type, position, and approximate size of clarity characteristics. All clarity characteristics may not be shown. Details of finish are not shown. The recipient of this Report may wish to consult a credentialed Jeweler or Gemologist about the importance and interrelationship of cut, color, clarity and carat weight.



### IMPORTANT DOCUMENT, STORE SAFELY

For security reference to this document, maintain the following security features: serial number and chemical analysis. To enhance its security, store this Report, serial number, security, and chemical analysis.

NOTICE: IMPORTANT  
LIMITATIONS ON BACK

COPYRIGHT ©2000 GIA GEM TRADE LABORATORY

GIA REPORT 11137812

EFTA00021613



# GIA GEM TRADE LABORATORY

## DIAMOND GRADING REPORT

September 08, 2003

Shape and Cutting Style ..... OVAL BRILLIANT

Measurements ..... 7.98 x 5.64 x 3.26 mm

Weight ..... 1.01 carat

### Proportions

Depth ..... 57.8 %

Table ..... 57 %

Girdle ..... THIN TO VERY THICK, FACETED

Culet ..... NONE

### Finish

Polish ..... GOOD

Symmetry ..... GOOD

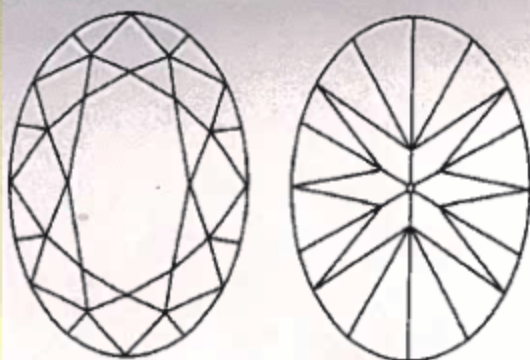
Clarity Grade ..... VS2

Color Grade ..... F

Fluorescence ..... MEDIUM BLUE

Comments:

NONE



### KEY TO SYMBOLS

○ Cloud

### GIA CLARITY SCALE

FLAWLESS

INTERNALLY  
FLAWLESSVVS<sub>1</sub>VVS<sub>2</sub>VS<sub>1</sub>VS<sub>2</sub>SI<sub>1</sub>SI<sub>2</sub>I<sub>1</sub>I<sub>2</sub>I<sub>3</sub>

### GIA COLOR SCALE

D

E

F

G

H

I

J

K

L

M

N

O

P

Q

R

S

T

U

V

W

X

Y

Z

New York Headquarters

580 Fifth Avenue | New York, NY 10036-4794

T: 212-221-5858 | F: 212-575-3095

Carlsbad

5355 Armada Drive | Carlsbad, CA 92008-4699

T: 760-603-4500 | F: 760-603-1814



204064102

This Report is not a guarantee, valuation or appraisal. This Report contains only the characteristics of the diamond described herein after it has been graded, tested, examined and analyzed by GIA Gem Trade Laboratory under 10X magnification, and/or has been inscribed, using the techniques and equipment available to GIA Gem Trade Laboratory at the time of the examination and/or at the time of being inscribed, including fully corrected triplet loupe and binocular microscope, master color comparison diamonds, standardized viewing environment and light source, electronic carat balance, synthetic diamond screening device, high intensity short wave fluorescence imaging system, short wave ultraviolet transmission detection system, optical measuring device, micro laser inscribing device, ProportionScope®, ultraviolet lamps, millimeter gauge, and ancillary instruments as necessary. Red symbols denote internal characteristics (inclusions). Green or black symbols denote external characteristics (blemishes). Diagram is an approximate representation of the diamond, and symbols shown indicate type, position, and approximate size of clarity characteristics. All clarity characteristics may not be shown. Details of finish are not shown. The recipient of this Report may wish to consult a credentialed Jeweler or Gemologist about the importance and interrelationship of cut, color, clarity and carat weight.



IMPORTANT DOCUMENT. STORE SAFELY

The Gemological Institute of America (GIA) is not responsible for the loss, theft, damage, or destruction of this document. It is the responsibility of the recipient to store this document in a safe and secure location.

NOTICE: IMPORTANT  
LIMITATIONS ON BACK

COPYRIGHT ©2000 GEMOLOGICAL INSTITUTE OF AMERICA, INC.



# GIA GEM TRADE LABORATORY

New York Headquarters  
580 Fifth Avenue | New York, NY 10036-4794  
T: 212-221-5858 | F: 212-575-3095

Carlsbad  
5355 Armada Drive | Carlsbad, CA 92008-4699  
T: 760-603-4500 | F: 760-603-1814



204125402

## DIAMOND GRADING REPORT

September 08, 2003

Shape and Cutting Style ..... OVAL BRILLIANT  
Measurements ..... 7.05 x 5.55 x 3.82 mm  
Weight ..... 1.01 carat

### Proportions

Depth ..... 68.8 %  
Table ..... 56 %  
Girdle ..... VERY THICK TO EXTREMELY THICK,

FACETED

Culet ..... NONE

### Finish

Polish ..... GOOD  
Symmetry ..... GOOD

Clarity Grade ..... VS1

Color Grade ..... G

Fluorescence ..... NONE

### Comments:

NONE

### GIA CLARITY SCALE

FLAWLESS  
INTERIALLY  
FLAWLESS

VVS<sub>1</sub>

VVS<sub>2</sub>

VS<sub>1</sub>

VS<sub>2</sub>

SI<sub>1</sub>

SI<sub>2</sub>

I<sub>1</sub>

I<sub>2</sub>

I<sub>3</sub>

### GIA COLOR SCALE

D

E

F

G

H

I

J

K

L

M

N

O

P

Q

R

S

T

U

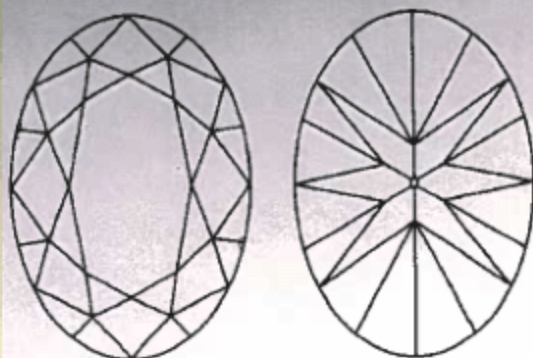
V

W

X

Y

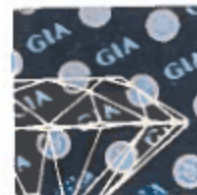
Z



### KEY TO SYMBOLS

~ Feather  
^ Natural

This Report is not a guarantee, valuation or appraisal. This Report contains only the characteristics of the diamond described herein after it has been graded, tested, examined and analyzed by GIA Gem Trade Laboratory under 10X magnification, and/or has been inscribed, using the techniques and equipment available to GIA Gem Trade Laboratory at the time of the examination and/or at the time of being inscribed, including fully corrected triplet loupe and binocular microscope, master color comparison diamonds, standardized viewing environment and light source, electronic carat balance, synthetic diamond screening device, high intensity short wave fluorescence imaging system, short wave ultraviolet transmission detection system, optical measuring device, micro laser inscribing device, ProportionScope® ultraviolet lamps, millimeter gauge, and ancillary instruments as necessary. Red symbols denote internal characteristics (inclusions). Green or black symbols denote external characteristics (blemishes). Diagram is an approximate representation of the diamond, and symbols shown indicate type, position, and approximate size of clarity characteristics. All clarity characteristics may not be shown. Details of finish are not shown. The recipient of this Report may wish to consult a credentialed Jeweler or Gemologist about the importance and interrelationship of cut, color, clarity and carat weight.



IMPORTANT DOCUMENT. STORE SAFELY

The accuracy of the information in this document is based on the information provided by the client and the results of the examination and analysis performed by GIA Gem Trade Laboratory. GIA Gem Trade Laboratory does not warrant the accuracy of the information provided by the client or the results of the examination and analysis performed by GIA Gem Trade Laboratory.

NOTICE: IMPORTANT  
LIMITATIONS ON BACK

COPYRIGHT ©2000 GEMOLOGICAL INSTITUTE OF AMERICA, INC.

EFTA00021615



# GIA GEM TRADE LABORATORY

New York Headquarters  
580 Fifth Avenue | New York, NY 10036-4794  
T: 212-221-5858 | F: 212-575-3095

Carlsbad  
5355 Armada Drive | Carlsbad, CA 92008-4899  
T: 760-603-4500 | F: 760-603-1814

## DIAMOND GRADING REPORT

January 15, 2001

Shape and Cutting Style ..... OVAL BRILLIANT  
Measurements ..... 7.58 x 5.63 x 3.76 mm  
Weight ..... 1.06 carat

### Proportions

Depth ..... 66.8 %  
Table ..... 55 %

Girdle ..... SLIGHTLY THICK TO THICK, FACETED  
Culet ..... NONE

### Finish

Polish ..... GOOD  
Symmetry ..... GOOD

Clarity Grade ..... VS2

Color Grade ..... G

Fluorescence ..... NONE

### Comments:

NONE

### GIA CLARITY SCALE

FLAWLESS

INTERNALLY  
FLAWLESS

VVS<sub>1</sub>

VVS<sub>2</sub>

VS<sub>1</sub>

VS<sub>2</sub>

SI<sub>1</sub>

SI<sub>2</sub>

I<sub>1</sub>

I<sub>2</sub>

I<sub>3</sub>

### GIA COLOR SCALE

D

E

F

G

H

I

J

K

L

M

N

O

P

Q

R

S

T

U

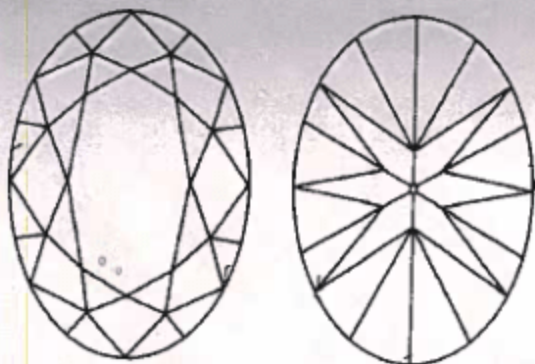
V

W

X

Y

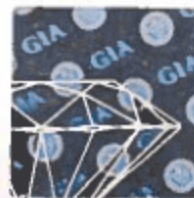
Z



### KEY TO SYMBOLS

- Crystal
- ~ Feather
- Cloud

This Report is not a guarantee, valuation or appraisal. This Report contains only the characteristics of the diamond described herein after it has been graded, tested, examined and analyzed by GIA Gem Trade Laboratory under 10X magnification, and/or has been inscribed using the techniques and equipment available to GIA Gem Trade Laboratory at the time of the examination and/or at the time of being inscribed, including fully corrected triplet loupe and binocular microscope, master color comparison diamonds, standardized viewing environment and light source, electronic carat balance, synthetic diamond screening device, high intensity short wave fluorescence imaging system, short wave ultraviolet transmission detection system, optical measuring device, micro laser inscribing device, ProportionScope®, ultraviolet lamps, millimeter gauge, and ancillary instruments as necessary. Red symbols denote internal characteristics (inclusions). Green or black symbols denote external characteristics (blemishes). Diagram is an approximate representation of the diamond, and symbols shown indicate type, position, and approximate size of clarity characteristics. All clarity characteristics may not be shown. Details of finish are not shown. The recipient of this Report may wish to consult a credentialed Jeweler or Gemologist about the importance and interrelationship of cut, color, clarity and carat weight.



IMPORTANT DOCUMENT. STORE SAFELY

The accuracy of this document is based on the information provided by the client and the results of the examination and analysis performed by GIA Gem Trade Laboratory. GIA Gem Trade Laboratory does not assume responsibility for the accuracy of this document if the information provided by the client is incorrect or if the results of the examination and analysis are affected by factors outside of GIA Gem Trade Laboratory's control.

NOTICE: IMPORTANT LIMITATIONS ON BACK

COPYRIGHT ©2000 GEMOLOGICAL INSTITUTE OF AMERICA, INC.

GIA REPORT 11383651

EFTA00021616



# GIA GEM TRADE LABORATORY

New York Headquarters  
580 Fifth Avenue | New York, NY 10036-4794  
T: 212-221-5858 | F: 212-575-3095

Carlsbad  
5355 Armada Drive | Carlsbad, CA 92008-4699  
T: 760-603-4500 | F: 760-603-1814

## DIAMOND GRADING REPORT

September 08, 2003

Shape and Cutting Style ..... OVAL BRILLIANT

Measurements ..... 7.76 x 5.58 x 3.70 mm

Weight ..... 1.02 carat

### Proportions

Depth ..... 66.3 %

Table ..... 60 %

Girdle ..... THIN TO THICK, FACETED

Culet ..... NONE

### Finish

Polish ..... GOOD

Symmetry ..... GOOD

Clarity Grade ..... VS2

Color Grade ..... G

Fluorescence ..... NONE

### Comments:

Clouds are not shown.

### GIA CLARITY SCALE

FLAWLESS  
INTERNALLY  
FLAWLESS

VVS<sub>1</sub>

VVS<sub>2</sub>

VS<sub>1</sub>

VS<sub>2</sub>

SI<sub>1</sub>

SI<sub>2</sub>

I<sub>1</sub>

I<sub>2</sub>

I<sub>3</sub>

VERY HEAVY  
CLARITY  
INCLUDED

VERY SLIGHTLY  
INCLUDED

SLIGHTLY INCLUDED

INCLUDED

### GIA COLOR SCALE

D

E

F

G

H

I

J

K

L

M

N

O

P

Q

R

S

T

U

V

W

X

Y

Z

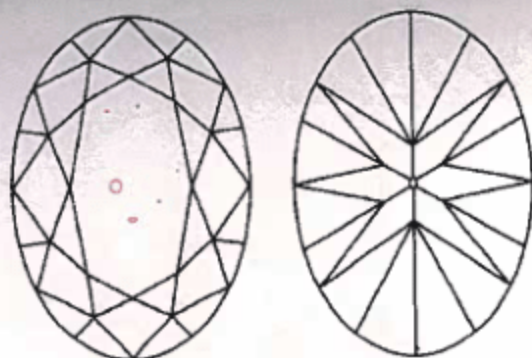
COLORLESS

NEAR COLORLESS

FAINT

VERY LIGHT

LIGHT

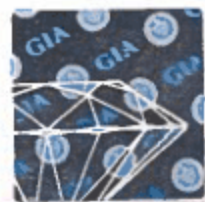


### KEY TO SYMBOLS

- Crystal
- ~ Feather
- ^ Natural



This Report is not a guarantee, valuation or appraisal. This Report contains only the characteristics of the diamond described herein after it has been graded, tested, examined and analyzed by GIA Gem Trade Laboratory under 10X magnification, and/or has been inscribed using the techniques and equipment available to GIA Gem Trade Laboratory at the time of the examination and/or at the time of being inscribed, including fully corrected triplet loupe and binocular microscope, master color comparison diamonds, standardized viewing environment and light source, electronic carat balance, synthetic diamond screening device, high intensity short wave fluorescence imaging system, short wave ultraviolet transmission detection system, optical measuring device, micro laser inscribing device, ProportionScope®, ultraviolet lamps, millimeter gauge, and ancillary instruments as necessary. Red symbols denote internal characteristics (inclusions). Green or black symbols denote external characteristics (blemishes). Diagram is an approximate representation of the diamond, and symbols shown indicate type, position, and approximate size of clarity characteristics. All clarity characteristics may not be shown. Details of finish are not shown. The recipient of this Report may wish to consult a credentialed Jeweler or Gemologist about the importance and interrelationship of cut, color, clarity and carat weight.



IMPORTANT DOCUMENT. STORE SAFELY

The symbols featured in this document, including the logo, are trademarks, service marks, and other marks of the Gemological Institute of America, Inc. All rights reserved.

NOTICE: IMPORTANT LIMITATIONS ON BACK

COPYRIGHT ©2000 GEMOLOGICAL INSTITUTE OF AMERICA, INC.

GIA REPORT 12811792

EFTA00021617



# GIA GEM TRADE LABORATORY

New York Headquarters  
580 Fifth Avenue | New York, NY 10036-4794  
T: 212-221-5656 | F: 212-575-3095

Carlsbad  
5355 Armada Drive | Carlsbad, CA 92008-4099  
T: 760-603-4500 | F: 760-603-1814

## DIAMOND GRADING REPORT

June 26, 2000

Shape and Cutting Style ..... ROUND BRILLIANT

Measurements ..... 6.26 - 6.38 x 4.06 mm

Weight ..... 1.03 carat

### Proportions

Depth ..... 64.2 %

Table ..... 58 %

Girdle ..... SLIGHTLY THICK TO THICK, FACETED

Culet ..... NONE

### Finish

Polish ..... GOOD

Symmetry ..... GOOD

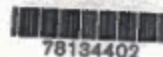
Clarity Grade ..... SI1

Color Grade ..... E

Fluorescence ..... NONE

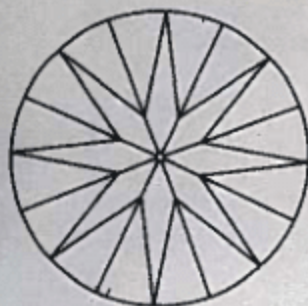
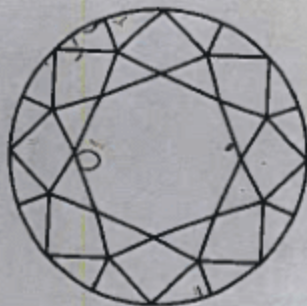
### Comments:

NONE



78134402

This Report is not a guarantee, valuation or appraisal. This Report contains only the characteristics of the diamond described herein after it has been graded, tested, examined and analyzed by GIA Gem Trade Laboratory under 10X magnification, and/or has been inscribed, using the techniques and equipment available to GIA Gem Trade Laboratory at the time of the examination and/or at the time of being inscribed, including fully corrected triplet loupe and binocular microscope, master color comparison diamonds, standardized viewing environment and light source, electronic carat balance, synthetic diamond screening device, high intensity short wave fluorescence imaging system, short wave ultraviolet transmission detection system, optical measuring device, micro laser inscribing device, ProportionScope®, ultraviolet lamps, millimeter gauge, and ancillary instruments as necessary. Red symbols denote internal characteristics (inclusions). Green or black symbols denote external characteristics (blemishes). Diagram is an approximate representation of the diamond, and symbols shown indicate type, position, and approximate size of clarity characteristics. All clarity characteristics may not be shown. Details of finish are not shown. The recipient of this Report may wish to consult a credentialed Jeweler or Gemologist about the importance and interrelationship of cut, color, clarity and carat weight.



### KEY TO SYMBOLS

- Crystal
- Feather
- Cloud

### GIA CLARITY SCALE

FLAWLESS  
INTERNALLY  
FLAWLESS

VVS<sub>1</sub>

VVS<sub>2</sub>

VS<sub>1</sub>

VS<sub>2</sub>

SI<sub>1</sub>

SI<sub>2</sub>

I<sub>1</sub>

I<sub>2</sub>

I<sub>3</sub>

VERY VERY  
SLIGHTLY  
INCLUDED

VERY SLIGHTLY  
INCLUDED

SLIGHTLY  
TO MODERATELY  
INCLUDED

MODERATELY  
TO HEAVILY  
INCLUDED

HEAVILY  
TO VERY HEAVILY  
INCLUDED

VERY HEAVILY  
INCLUDED

### GIA COLOR SCALE

D

E

F

G

H

I

J

K

L

M

N

O

P

Q

R

S

T

U

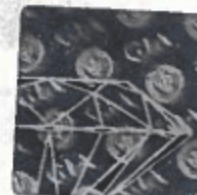
V

W

X

Y

Z



### IMPORTANT DOCUMENT, STORE SAFELY

The recipient agrees to this statement:  
I have read and understand the contents of this report and the limitations of the report. I agree to use this report for the purposes intended and to keep it safe and secure. I agree to return this report to GIA if requested.

NOTICE: IMPORTANT  
LIMITATIONS ON BACK

COPYRIGHT ©2000 GIA GEM TRADE LABORATORY



# GIA GEM TRADE LABORATORY

New York Headquarters  
580 Fifth Avenue | New York, NY 10036-4794  
T: 212-221-5858 | F: 212-575-3095

Carlsbad  
5355 Armada Drive | Carlsbad, CA 92008-4699  
T: 760-603-4500 | F: 760-603-1814

## DIAMOND GRADING REPORT

September 05, 2003

Shape and Cutting Style ..... ROUND BRILLIANT

Measurements ..... 6.43 - 6.47 x 3.98 mm

Weight ..... 1.02 carat

### Proportions

Depth ..... 61.7 %

Table ..... 57 %

Girdle ..... MEDIUM TO SLIGHTLY THICK, FACETED

Culet ..... NONE

### Finish

Polish ..... GOOD

Symmetry ..... VERY GOOD

Clarity Grade ..... VS1

Color Grade ..... G

Fluorescence ..... NONE

### Comments:

Additional clouds are not shown.

### GIA CLARITY SCALE

FLAWLESS

INTERNALLY  
FLAWLESS

VVS<sub>1</sub>

VVS<sub>2</sub>

VS<sub>1</sub>

VS<sub>2</sub>

S<sub>1</sub>

S<sub>2</sub>

I<sub>1</sub>

I<sub>2</sub>

I<sub>3</sub>

VERY VERY  
SLIGHTLY  
INCLUDED

VERY SLIGHTLY  
INCLUDED

SLIGHTLY  
INCLUDED

INCLUDED

### GIA COLOR SCALE

D

E

F

G

H

I

J

K

L

M

N

O

P

Q

R

S

T

U

V

W

X

Y

Z

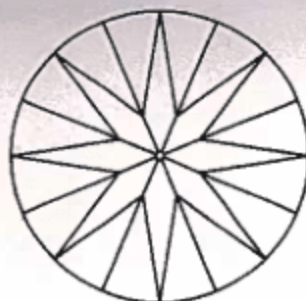
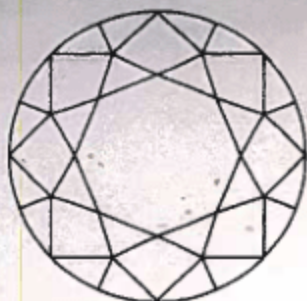
COLORLESS

NEAR COLORLESS

FANT

VERY LIGHT

LIGHT

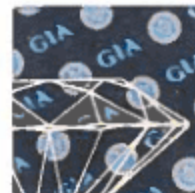


### KEY TO SYMBOLS

- Crystal
- Cloud
- \\ Needle
- ^ Natural



This Report is not a guarantee, valuation or appraisal. This Report contains only the characteristics of the diamond described herein after it has been graded, tested, examined and analyzed by GIA Gem Trade Laboratory under 10X magnification, and/or has been inscribed, using the techniques and equipment available to GIA Gem Trade Laboratory at the time of the examination and/or at the time of being inscribed, including fully corrected triplet loupe and binocular microscope, master color comparison diamonds, standardized viewing environment and light source, electronic carat balance, synthetic diamond screening device, high intensity short wave fluorescence imaging system, short wave ultraviolet transmission detection system, optical measuring device, micro laser inscribing device, ProportionScope®, ultraviolet lamps, millimeter gauge, and ancillary instruments as necessary. Red symbols denote internal characteristics (inclusions). Green or black symbols denote external characteristics (blemishes). Diagram is an approximate representation of the diamond, and symbols shown indicate type, position, and approximate size of clarity characteristics. All clarity characteristics may not be shown. Details of finish are not shown. The recipient of this Report may wish to consult a credentialed Jeweler or Gemologist about the importance and interrelationship of cut, color, clarity and carat weight.



### IMPORTANT DOCUMENT, STORE SAFELY

The quality of this document is guaranteed by GIA. It is the property of GIA and should be stored in a safe place. It is not to be loaned, sold, or otherwise disposed of without the written consent of GIA.

### NOTICE: IMPORTANT LIMITATIONS ON BACK

COPYRIGHT ©2000 GEMOLOGICAL INSTITUTE OF AMERICA, INC.



# GIA GEM TRADE LABORATORY

New York Headquarters  
580 Fifth Avenue | New York, NY 10036-4794  
T: 212-221-5858 | F: 212-575-3095

Carlsbad  
5355 Armada Drive | Carlsbad, CA 92008-4899  
T: 760-683-4500 | F: 760-683-1814

## DIAMOND GRADING REPORT

September 04, 2003

Shape and Cutting Style ..... ROUND BRILLIANT

Measurements ..... 6.54 - 6.57 x 4.19 mm

Weight ..... 1.11 carat

### Proportions

Depth ..... 63.9 %

Table ..... 58 %

Girdle ..... THIN TO THICK, FACETED

Culet ..... NONE

### Finish

Polish ..... VERY GOOD

Symmetry ..... VERY GOOD

Clarity Grade ..... SI1

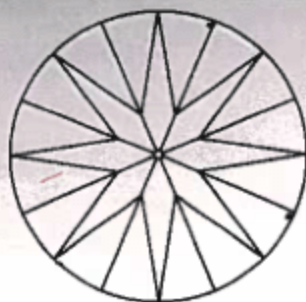
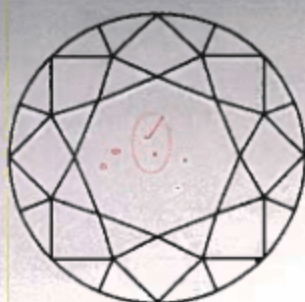
Color Grade ..... F

Fluorescence ..... NONE

### Comments:

Additional clouds are not shown.

Surface graining is not shown.



### KEY TO SYMBOLS

- Cloud
- Crystal
- ~ Feather
- ^ Indented Natural

### GIA CLARITY SCALE

FLAWLESS

INTERNALLY  
FLAWLESS

VVS<sub>1</sub>

VVS<sub>2</sub>

VS<sub>1</sub>

VS<sub>2</sub>

SI<sub>1</sub>

SI<sub>2</sub>

I<sub>1</sub>

I<sub>2</sub>

I<sub>3</sub>

### GIA COLOR SCALE

D

E

F

G

H

I

J

K

L

M

N

O

P

Q

R

S

T

U

V

W

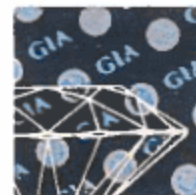
X

Y

Z



This Report is not a guarantee, valuation or appraisal. This Report contains only the characteristics of the diamond described herein after it has been graded, tested, examined and analyzed by GIA Gem Trade Laboratory under 10X magnification, and/or has been inscribed, using the techniques and equipment available to GIA Gem Trade Laboratory at the time of the examination and/or at the time of being inscribed, including fully corrected triplet loupe and binocular microscope, master color comparison diamonds, standardized viewing environment and light source, electronic carat balance, synthetic diamond screening device, high intensity short wave fluorescence imaging system, short wave ultraviolet transmission detection system, optical measuring device, micro laser inscribing device, ProportionScope®, ultraviolet lamps, millimeter gauge, and ancillary instruments as necessary. Red symbols denote internal characteristics (inclusions). Green or black symbols denote external characteristics (blemishes). Diagram is an approximate representation of the diamond, and symbols shown indicate type, position, and approximate size of clarity characteristics. All clarity characteristics may not be shown. Details of finish are not shown. The recipient of this Report may wish to consult a credentialed Jeweler or Gemologist about the importance and interrelationship of cut, color, clarity and carat weight.



### IMPORTANT DOCUMENT. STORE SAFELY

The quality features in this document, including the certificate, identify certain attributes that are not guaranteed by GIA. These are not guaranteed by GIA. Please refer to the back of this document for more information.

NOTICE: IMPORTANT  
LIMITATIONS ON BACK

COPYRIGHT ©2000 GEMOLOGICAL INSTITUTE OF AMERICA, INC.



# GIA GEM TRADE LABORATORY

## DIAMOND GRADING REPORT

June 26, 2000

Shape and Cutting Style ..... ROUND BRILLIANT

Measurements ..... 6.36 - 6.43 x 3.95 mm

Weight ..... 1.01 carat

### Proportions

Depth ..... 61.8 %

Table ..... 58 %

Girdle ..... MEDIUM TO THICK, FACETED

Culet ..... NONE

### Finish

Polish ..... VERY GOOD

Symmetry ..... GOOD

Clarity Grade ..... SI1

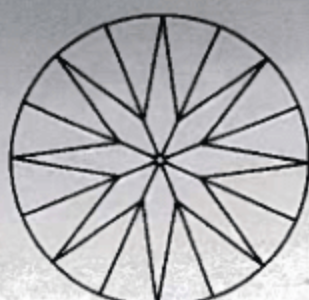
Color Grade ..... F

Fluorescence ..... NONE

### Comments:

Additional clouds are not shown.

Surface graining is not shown.



### KEY TO SYMBOLS

- Crystal
- Cloud
- Needle
- Feather

△ Natural

### GIA CLARITY SCALE

FLAWLESS  
INTERNALLY  
FLAWLESS

VVS<sub>1</sub>

VVS<sub>2</sub>

VS<sub>1</sub>

VS<sub>2</sub>

SI<sub>1</sub>

SI<sub>2</sub>

I<sub>1</sub>

I<sub>2</sub>

I<sub>3</sub>

VERY VERY  
SLIGHTLY  
INCLUDED

VERY SLIGHTLY  
INCLUDED

SLIGHTLY INCLUDED

INCLUDED

### GIA COLOR SCALE

D

E

F

G

H

I

J

K

L

M

N

O

P

Q

R

S

T

U

V

W

X

Y

Z

COLORLESS

NEAR COLORLESS

FAIR

VERY LIGHT

LIGHT

New York Headquarters  
580 Fifth Avenue | New York, NY 10036-4794  
T: 212-221-5858 | F: 212-575-3095

Carlsbad  
5355 Armada Drive | Carlsbad, CA 92008-4693  
T: 760-603-4500 | F: 760-603-1814



This Report is not a guarantee, valuation or appraisal. This Report contains only the characteristics of the diamond described herein after it has been graded, tested, examined and analyzed by GIA Gem Trade Laboratory under 10X magnification, and/or has been inscribed, using the techniques and equipment available to GIA Gem Trade Laboratory at the time of the examination and/or at the time of being inscribed, including fully corrected triplet loupe and binocular microscope, master color comparison diamonds, standardized viewing environment and light source, electronic carat balance, synthetic diamond screening device, high intensity short wave fluorescence imaging system, short wave ultraviolet transmission detection system, optical measuring device, micro laser inscribing device, ProportionScope®, ultraviolet lamps, millimeter gauge, and ancillary instruments as necessary. Red symbols denote internal characteristics (inclusions). Green or black symbols denote external characteristics (blemishes). Diagram is an approximate representation of the diamond, and symbols shown indicate type, position, and approximate size of clarity characteristics. All clarity characteristics may not be shown. Details of finish are not shown. The recipient of this Report may wish to consult a credentialed Jeweler or Gemologist about the importance and interrelationship of cut, color, clarity and carat weight.



### IMPORTANT DOCUMENT, STORE SAFELY

This report belongs to the owner. It should be kept safe and secure. It should be shown to the owner only. It should not be loaned or given to anyone else.

NOTICE: IMPORTANT  
LIMITATIONS ON BACK

COPYRIGHT ©2000 GIA GEM TRADE LABORATORY



# GIA GEM TRADE LABORATORY

New York Headquarters  
580 Fifth Avenue | New York, NY 10036-4794  
T: 212-221-5858 | F: 212-575-3095

Carlsbad  
5355 Armada Drive | Carlsbad, CA 92008-4899  
T: 760-803-4500 | F: 760-803-1814

## DIAMOND GRADING REPORT

September 04, 2003

Shape and Cutting Style ..... ROUND BRILLIANT

Measurements ..... 6.29 - 6.34 x 4.01 mm

Weight ..... 1.00 carat

### Proportions

Depth ..... 63.5 %

Table ..... 57 %

Girdle ..... THIN TO THICK, FACETED

Culet ..... NONE

### Finish

Polish ..... GOOD

Symmetry ..... GOOD

Clarity Grade ..... SI1

Color Grade ..... G

Fluorescence ..... NONE

### Comments:

Additional clouds are not shown.



203882602

This Report is not a guarantee, valuation or appraisal. This Report contains only the characteristics of the diamond described herein after it has been graded, tested, examined and analyzed by GIA Gem Trade Laboratory under 10x magnification, and/or has been inscribed, using the techniques and equipment available to GIA Gem Trade Laboratory at the time of the examination and/or at the time of being inscribed, including fully corrected triplet loupe and binocular microscope, master color comparison diamonds, standardized viewing environment and light source, electronic carat balance, synthetic diamond screening device, high intensity short wave fluorescence imaging system, short wave ultraviolet transmission detection system, optical measuring device, micro laser inscribing device, ProportionScope®, ultraviolet lamps, millimeter gauge, and ancillary instruments as necessary. Red symbols denote internal characteristics (inclusions). Green or black symbols denote external characteristics (blemishes). Diagram is an approximate representation of the diamond, and symbols shown indicate type, position, and approximate size of clarity characteristics. All clarity characteristics may not be shown. Details of finish are not shown. The recipient of this Report may wish to consult a credentialed Jeweler or Gemologist about the importance and interrelationship of cut, color, clarity and carat weight.

### GIA CLARITY SCALE

FLAWLESS  
INTERIALLY  
FLAWLESS

VVS<sub>1</sub>

VVS<sub>2</sub>

VS<sub>1</sub>

VS<sub>2</sub>

SI<sub>1</sub>

SI<sub>2</sub>

I<sub>1</sub>

I<sub>2</sub>

I<sub>3</sub>

### GIA COLOR SCALE

D

E

F

G

H

I

J

K

L

M

N

O

P

Q

R

S

T

U

V

W

X

Y

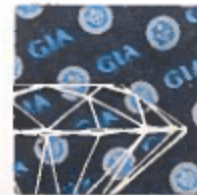
Z



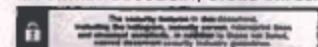
### KEY TO SYMBOLS

- Crystal
- ~ Feather
- Cloud
- ◉ Cavity

- △ Indented Natural
- △ Extra Facet



IMPORTANT DOCUMENT, STORE SAFELY



NOTICE: IMPORTANT  
LIMITATIONS ON BACK

COPYRIGHT ©2000 GEMOLOGICAL INSTITUTE OF AMERICA, INC.

GIA REPORT 12813303

EFTA00021622



# GIA GEM TRADE LABORATORY

New York Headquarters  
580 Fifth Avenue | New York, NY 10036-4794  
T: 212-221-5858 | F: 212-575-3085

Carlsbad  
5355 Armada Drive | Carlsbad, CA 92008-4699  
T: 760-603-4500 | F: 760-603-1814

## DIAMOND GRADING REPORT

September 05, 2003

Shape and Cutting Style ..... ROUND BRILLIANT  
Measurements ..... 6.39 - 6.43 x 3.98 mm  
Weight ..... 1.01 carat

### Proportions

Depth ..... 62.1 %  
Table ..... 58 %  
Girdle ..... THIN TO SLIGHTLY THICK, FACETED  
Culet ..... VERY SMALL

### Finish

Polish ..... GOOD  
Symmetry ..... GOOD

Clarity Grade ..... SI1

Color Grade ..... D

Fluorescence ..... FAINT

### Comments:

Pinpoints are not shown.

### GIA CLARITY SCALE

FLAWLESS  
INTERNALLY  
FLAWLESS

VVS<sub>1</sub>

VVS<sub>2</sub>

VS<sub>1</sub>

VS<sub>2</sub>

SI<sub>1</sub>

SI<sub>2</sub>

I<sub>1</sub>

I<sub>2</sub>

I<sub>3</sub>

VERY NEAR  
SLIGHTLY  
INCLUDED

NEAR SLIGHTLY  
INCLUDED

SLIGHTLY  
INCLUDED

INCLUDED

### GIA COLOR SCALE

D

E

F

G

H

I

J

K

L

M

N

O

P

Q

R

S

T

U

V

W

X

Y

Z

COLORLESS

NEAR COLORLESS

FAIR

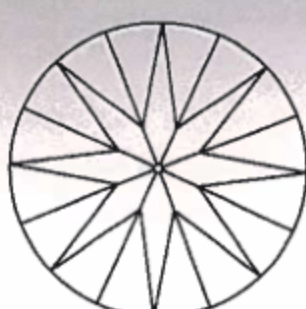
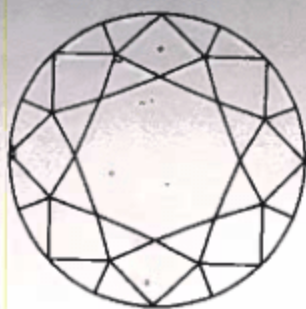
VERY LIGHT

LIGHT



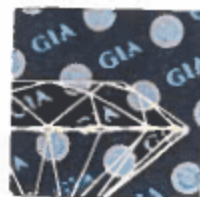
203997002

This Report is not a guarantee, valuation or appraisal. This Report contains only the characteristics of the diamond described herein after it has been graded, tested, examined and analyzed by GIA Gem Trade Laboratory under 10X magnification, and/or has been inscribed, using the techniques and equipment available to GIA Gem Trade Laboratory at the time of the examination and/or at the time of being inscribed, including fully corrected triplet loupe and binocular microscope, master color comparison diamonds, standardized viewing environment and light source, electronic carat balance, synthetic diamond screening device, high intensity short wave fluorescence imaging system, short wave ultraviolet transmission detection system, optical measuring device, micro laser inscribing device, ProportionScope<sup>®</sup>, ultraviolet lamps, millimeter gauge, and ancillary instruments as necessary. Red symbols denote internal characteristics (inclusions). Green or black symbols denote external characteristics (blemishes). Diagram is an approximate representation of the diamond, and symbols shown indicate type, position, and approximate size of clarity characteristics. All clarity characteristics may not be shown. Details of finish are not shown. The recipient of this Report may wish to consult a credentialed Jeweler or Gemologist about the importance and interrelationship of cut, color, clarity and carat weight.



### KEY TO SYMBOLS

- Crystal
- Knot
- △ Indented Natural



### IMPORTANT DOCUMENT, STORE SAFELY

This document is not to be distributed outside the laboratory, except for the purpose of the report. It is the property of GIA Gem Trade Laboratory and should be returned to GIA Gem Trade Laboratory upon request.

NOTICE: IMPORTANT  
LIMITATIONS ON BACK

COPYRIGHT ©2000 GEMOLOGICAL INSTITUTE OF AMERICA, INC.

EFTA00021623



# GIA GEM TRADE LABORATORY

New York Headquarters  
580 Fifth Avenue | New York, NY 10036-4794  
T: 212-221-5858 | F: 212-575-3095

Carlsbad  
5355 Avenida Drive | Carlsbad, CA 92008-4899  
T: 760-603-4500 | F: 760-603-1814

## DIAMOND GRADING REPORT

September 04, 2003

Shape and Cutting Style ..... ROUND BRILLIANT  
Measurements ..... 6.68 - 6.77 x 3.96 mm  
Weight ..... 1.07 carat

### Proportions

Depth ..... 58.9 %  
Table ..... 57 %  
Girdle ..... THIN TO MEDIUM, FACETED  
Culet ..... NONE

### Finish

Polish ..... VERY GOOD  
Symmetry ..... GOOD

Clarity Grade ..... VS2

Color Grade ..... G

Fluorescence ..... NONE

### Comments:

Additional clouds are not shown.

### GIA CLARITY SCALE

FLAWLESS  
INTERIALLY  
FLAWLESS

VVS<sub>1</sub>

VVS<sub>2</sub>

VS<sub>1</sub>

VS<sub>2</sub>

SI<sub>1</sub>

SI<sub>2</sub>

I<sub>1</sub>

I<sub>2</sub>

I<sub>3</sub>

VERY NEAR  
SLIGHTLY  
INCLUDED

VERY SLIGHTLY  
INCLUDED

SLIGHTLY  
INCLUDED

INCLUDED

### GIA COLOR SCALE

COLORED

NEAR COLORED

FLAWT

VERY LIGHT

LIGHT

D

E

F

G

H

I

J

K

L

M

N

O

P

Q

R

S

T

U

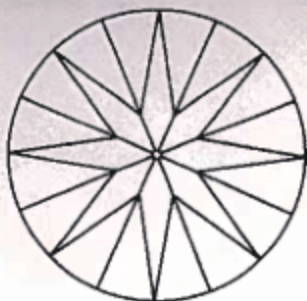
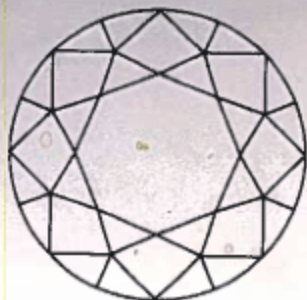
V

W

X

Y

Z



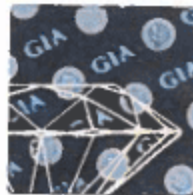
### KEY TO SYMBOLS

- Crystal
- Cloud
- \\ Needle



203881802

This Report is not a guarantee, valuation or appraisal. This Report contains only the characteristics of the diamond described herein after it has been graded, tested, examined and analyzed by GIA Gem Trade Laboratory under 10X magnification, and/or has been inscribed, using the techniques and equipment available to GIA Gem Trade Laboratory at the time of the examination and/or at the time of being inscribed, including fully corrected triplet loupe and binocular microscope, master color comparison diamonds, standardized viewing environment and light source, electronic carat balance, synthetic diamond screening device, high intensity short wave fluorescence imaging system, short wave ultraviolet transmission detection system, optical measuring device, micro laser inscribing device, ProportionScope®, ultraviolet lamps, millimeter gauge, and ancillary instruments as necessary. Red symbols denote internal characteristics (inclusions). Green or black symbols denote external characteristics (blemishes). Diagram is an approximate representation of the diamond, and symbols shown indicate type, position, and approximate size of clarity characteristics. All clarity characteristics may not be shown. Details of finish are not shown. The recipient of this Report may wish to consult a credentialed Jeweler or Gemologist about the importance and interrelationship of cut, color, clarity and carat weight.



### IMPORTANT DOCUMENT, STORE SAFELY

This certificate is part of the diamond. It should be kept with the diamond, and should not be separated from it. It is a legal document and should be stored safely.

NOTICE: IMPORTANT LIMITATIONS ON BACK

COPYRIGHT ©2000 GEMOLOGICAL INSTITUTE OF AMERICA, INC.



# GIA GEM TRADE LABORATORY

## DIAMOND GRADING REPORT

September 04, 2003

Shape and Cutting Style ..... ROUND BRILLIANT

Measurements ..... 6.49 - 6.54 x 4.05 mm

Weight ..... 1.05 carat

## Proportions

Depth ..... 62.2 %

Table ..... 56 %

Girdle ..... THIN TO THICK, FACETED

Culet ..... NONE

## Finish

Polish ..... GOOD

Symmetry ..... VERY GOOD

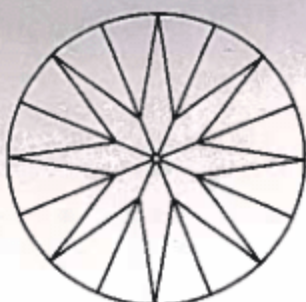
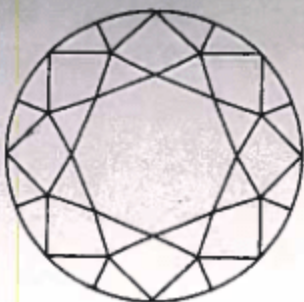
Clarity Grade ..... VS1

Color Grade ..... E

Fluorescence ..... NONE

## Comments:

NONE



## KEY TO SYMBOLS

- Needle
- Natural

GIA  
CLARITY SCALEFLAWLESS  
INTERNALLY FLAWLESSVVS<sub>1</sub>VVS<sub>2</sub>VS<sub>1</sub>VS<sub>2</sub>SI<sub>1</sub>SI<sub>2</sub>I<sub>1</sub>I<sub>2</sub>I<sub>3</sub>GIA  
COLOR SCALE

COLORLESS

NEAR COLORLESS

Faint

VERY LIGHT

LIGHT

D

E

F

G

H

I

J

K

L

M

N

O

P

Q

R

S

T

U

V

W

X

Y

Z

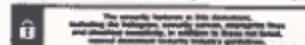


203880402

This Report is not a guarantee, valuation or appraisal. This Report contains only the characteristics of the diamond described herein after it has been graded, tested, examined and analyzed by GIA Gem Trade Laboratory under 10X magnification, and/or has been inscribed, using the techniques and equipment available to GIA Gem Trade Laboratory at the time of the examination and/or at the time of being inscribed, including fully corrected triplet loupe and binocular microscope, master color comparison diamonds, standardized viewing environment and light source, electronic carat balance, synthetic diamond screening device, high intensity short wave fluorescence imaging system, short wave ultraviolet transmission detection system, optical measuring device, micro laser inscribing device, ProportionScope®, ultraviolet lamps, millimeter gauge, and ancillary instruments as necessary. Red symbols denote internal characteristics (inclusions). Green or black symbols denote external characteristics (blemishes). Diagram is an approximate representation of the diamond, and symbols shown indicate type, position, and approximate size of clarity characteristics. All clarity characteristics may not be shown. Details of finish are not shown. The recipient of this Report may wish to consult a credentialed Jeweler or Gemologist about the importance and interrelationship of cut, color, clarity and carat weight.



## IMPORTANT DOCUMENT, STORE SAFELY



NOTICE: IMPORTANT  
LIMITATIONS ON BACK

COPYRIGHT ©2000 GEMOLOGICAL INSTITUTE OF AMERICA, INC.