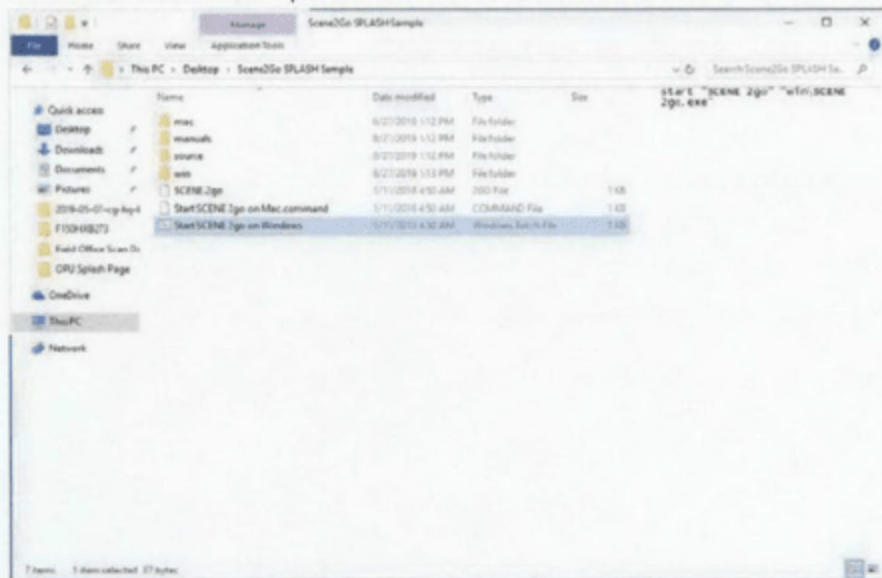


# SCENE2GO

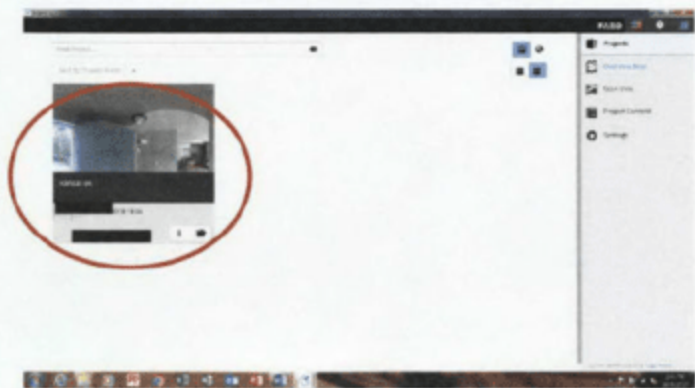
## Instructions for FARO SCENE Pointcloud Interactive

You **MUST** retain the entire folder *WebShare/SCENE2Go* if transferred off on external harddrive, thumbdrive, or DVD/CD. This is a self-executable package so the entire contents of the folder need to stay together.

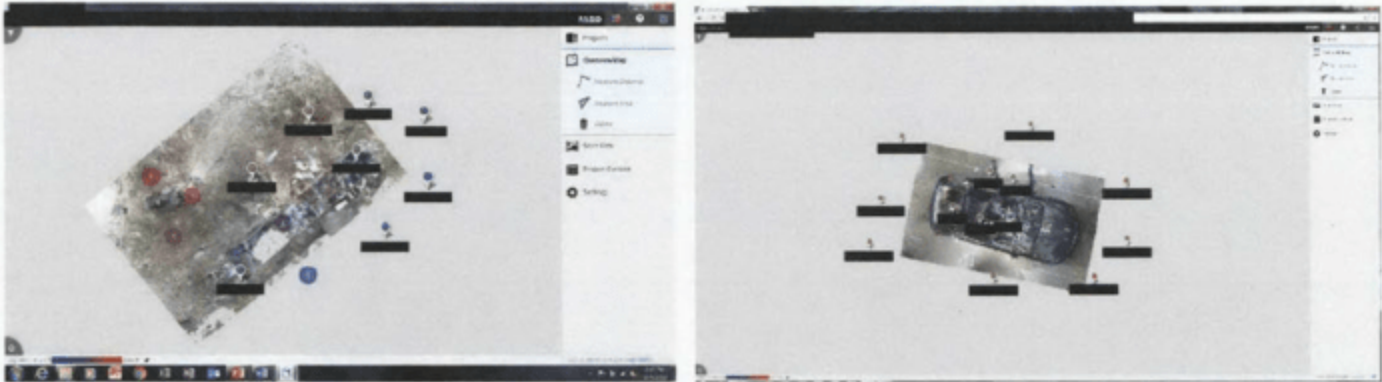
- Locate and open the *WebShare/SCENE2Go* folder



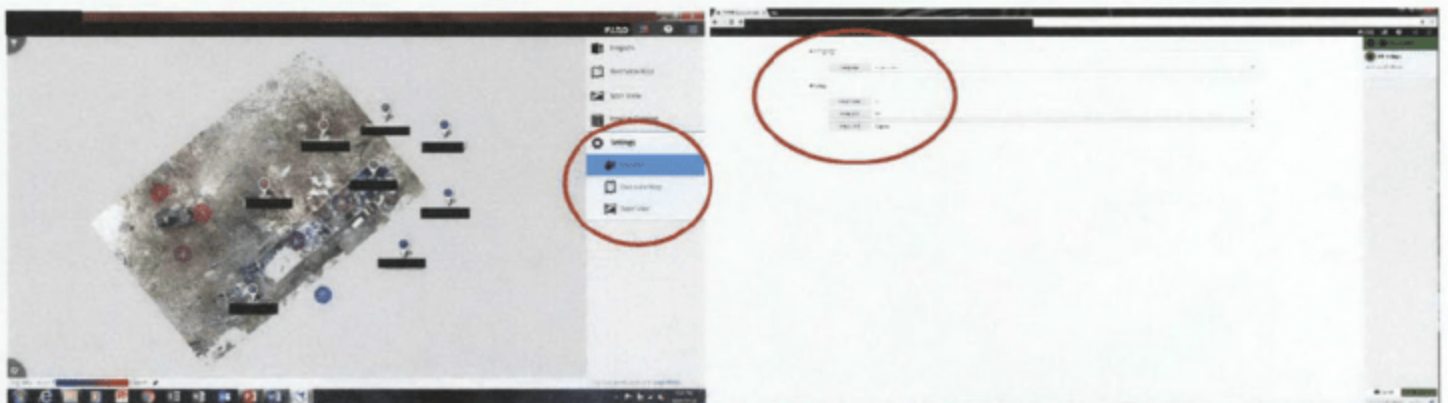
- If using a PC, double click on **Start SCENE 2Go on Windows**
- If using a MAC, double click on **Start SCENE 2Go on Mac.command**
- Once opened this is your Home page.
- Click on the image to open the job. It may or may not populate with a map view shown on the right. The toggle on map click the globe icon in the upper right corner. Location will only be accurate if GPS coordinates were collected and retained in scan data.



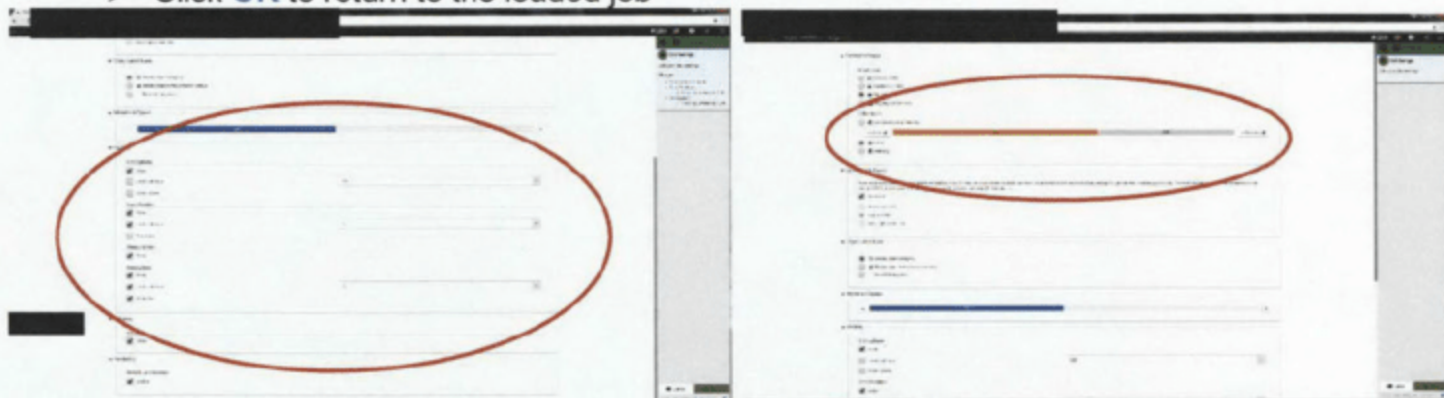
- When the job is loaded, you will have a screen with a top down view of the scene. You can use your mouse scroll to zoom in or out.



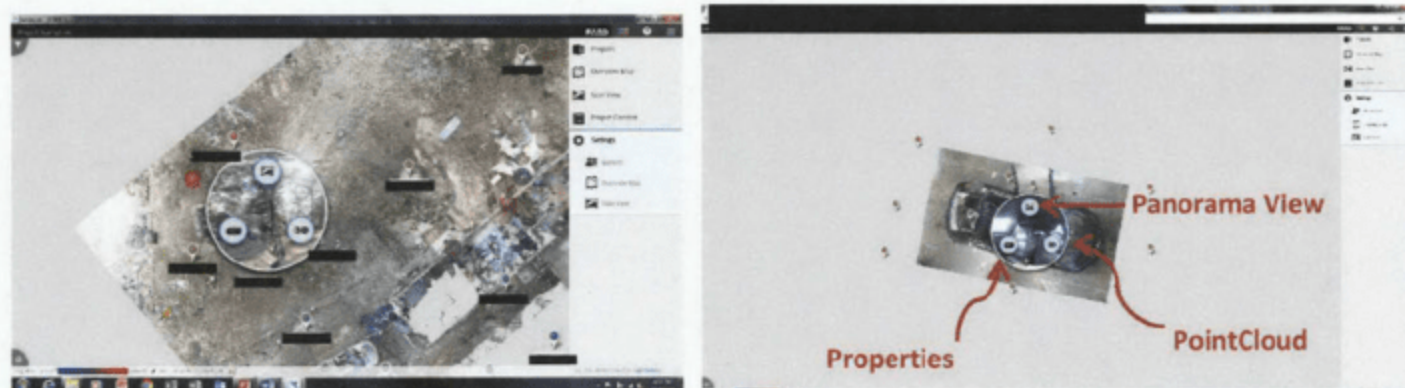
- **BEFORE** selecting a scan, set up your measuring and viewing preferences
  - Click once on **Settings** located on the right side navigation bar
  - Click once on **General**
  - Select the **units** you prefer (*normally Imperial inches or ft, and ft2*)
  - Click once on **OK**



- **ALSO** under **Settings**
  - Click once on **Scan View**
  - Under **Visibility**, Check **Scan Position- Limit visibility to**.  
*This reduces the number of scan positions in your view (can clutter) to only the ones closest to you. You can navigate from one scan position to another by clicking on each of the visible scan position markers. You can always return to this setting to make adjustments.*
  - Good Starting Settings-** Large Exterior Scene 100-150ft, Small Exterior or Structure Interiors 25-35ft, Vehicles 10-15ft.
  - Under **Visibility** you also have the option to control the viewing of scan names, annotations, and other detail items.
  - Under **Panorama Image** you have the option to **Combine Color & Intensity**.  
*This makes your image views a hybrid of your color planar image and black/white scan point data.*
  - Click **OK** to return to the loaded job



- Return to **Overview Map** using the right column to navigate. Click on the scan markers to choose scan viewing options. **Panorama View** (spherical photo), **3D View** (pointcloud), **Properties** (data details)  
**Once in a Panorama or 3D View you can "hop" between scan position, rotate and zoom using your mouse.**



- To pull a measurement:

- After selecting a scan position marker select **Panorama** (photo)
  - Once inside the spherical image, click once on the **Measure Distance** located in the right side navigation bar
  - Select a point to begin the measurement and a point to end the measurement
  - Then click once on the **OK** button at the bottom right hand corner of your screen
  - The distance should appear annotated on the measured line
  - To clear, click once on **Cancel**
  - This measurement will be stored in your **Project Content**



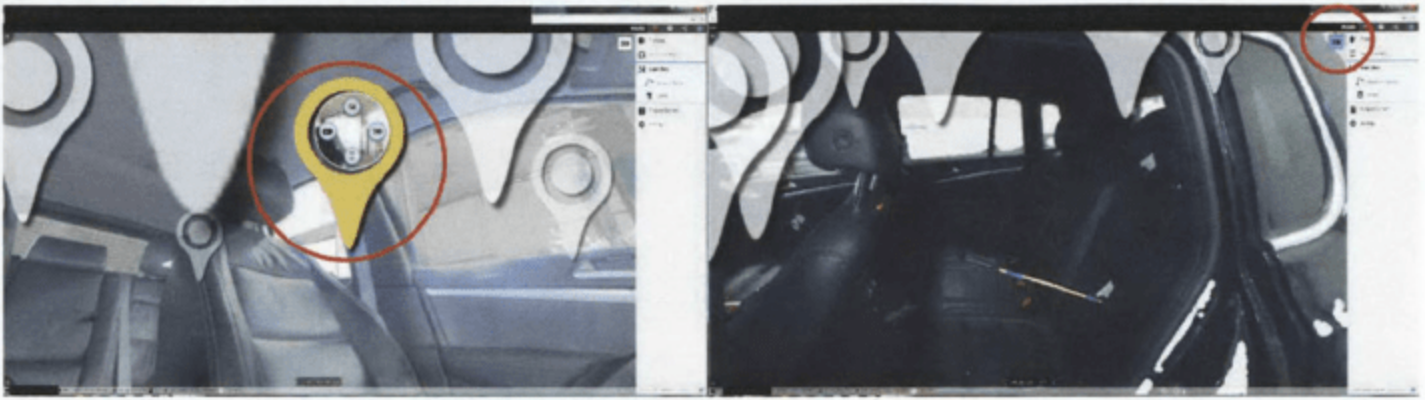
- The gear in the lower left corner has more in-depth tools. The color wheel tool allows you to shift between your color image and black/white scan data points.

- To navigate between scans:

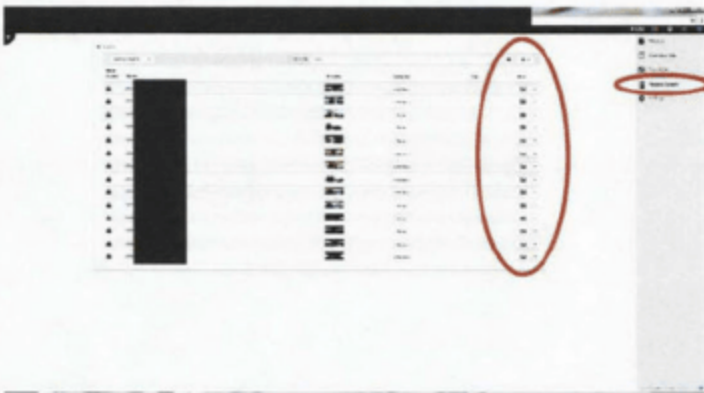
- When in a scan view you will see other scan locations within your *visibility distance*.



- After selecting a scan position marker it becomes highlighted. You can select to view the **Panorama** (spherical photo), **3D** (Point Cloud), **Scan Properties** or **Overview Map**. Once in a view you can use the box in the upper right corner to **switch between 2D and 3D**.



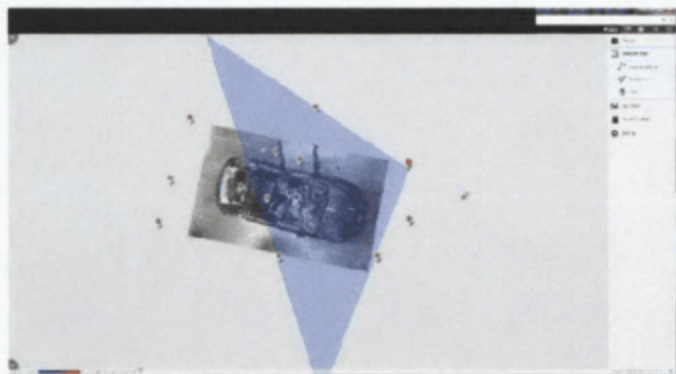
- **ALSO** under **Project Content** in the right navigation column you can view a list of all scans within the project and select viewing options from the drop down menu. *This is a great tool if you are having difficulty finding a specific scan.*



- Click once on **Scan Properties** and you can view the planar image and additional recorded data from the raw scan. You are brought to this same screen if you select **Scan Properties** off a scan icon while in a view.



- Click once on **Overview Map** in the drop down and that scan position will be highlighted in the **Overview Map**.



Contact the FBI Laboratory / Operational Projects Unit at any time if you have additional questions.

[REDACTED] *TDDP supervisor*  
[REDACTED] (office)  
[REDACTED] (cell)

[REDACTED]  
[REDACTED] (office)  
[REDACTED] (cell)

[REDACTED]  
[REDACTED] (office)  
[REDACTED] (cell)

[REDACTED]  
[REDACTED] (office)  
[REDACTED] (cell)